

JMJD4 Antibody

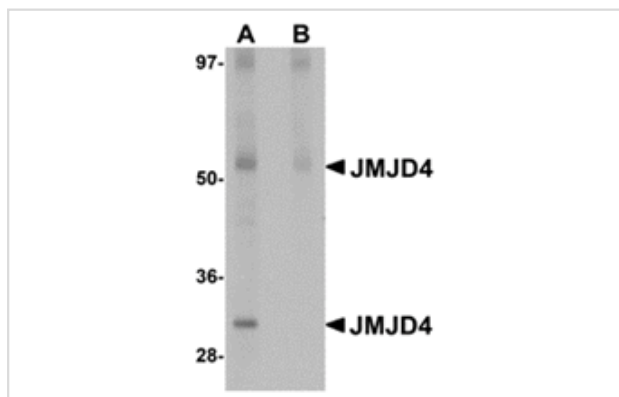
Catalog No: #24960

Orders: order@signalwayantibody.comSupport: tech@signalwayantibody.com

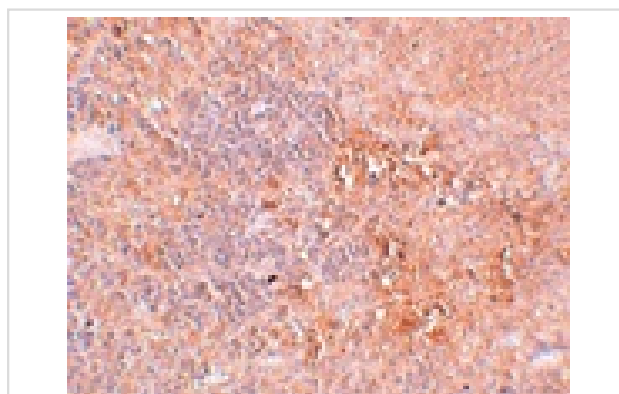
Description

Product Name	JMJD4 Antibody
Host Species	Rabbit
Clonality	Polyclonal
Purification	Affinity chromatography purified via peptide column
Applications	ELISA WB IHC
Species Reactivity	Hu Rt
Specificity	This antibody will not recognize other members of the JMJD family.
Immunogen Type	Peptide
Immunogen Description	Raised against a 17 amino acid peptide from near the amino terminus of human JMJD4.
Target Name	JMJD4
Other Names	Jumonji domain-containing protein 4, JmjC domain-containing protein 4
Accession No.	NP_075383
Concentration	1mg/ml
Formulation	Supplied in PBS containing 0.02% sodium azide.
Storage	Can be stored at -20°C, stable for one year. As with all antibodies care should be taken to avoid repeated freeze thaw cycles. Antibodies should not be exposed to prolonged high temperatures.

Images



Western blot analysis of JMJD4 in human spleen tissue lysate with JMJD4 antibody at 1 ug/mL in (A) the absence and (B) the presence of blocking peptide.



Immunohistochemistry of JMJD4 in rat spleen tissue with JMJD4 antibody at 2.5 ug/mL.

Background

The jumonji domain-containing protein (JMJD) family is defined by the presence of the JmjC domain that is observed in several diverse species. While several JMJD proteins have been identified as being involved in chromatin regulation, histone demethylation and development, the JMJD4 has not been identified. JMJD4 is expressed in multiple tissues and At least three isoforms of JMJD4 are known to exist.

Note: This product is for in vitro research use only and is not intended for use in humans or animals.