

JMJD7 Antibody

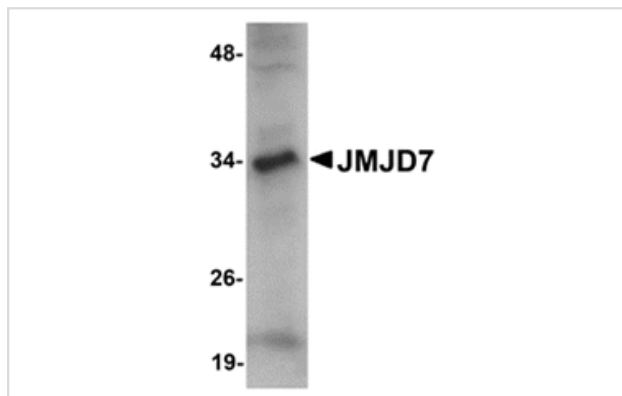
Catalog No: #24963

Orders: order@signalwayantibody.comSupport: tech@signalwayantibody.com

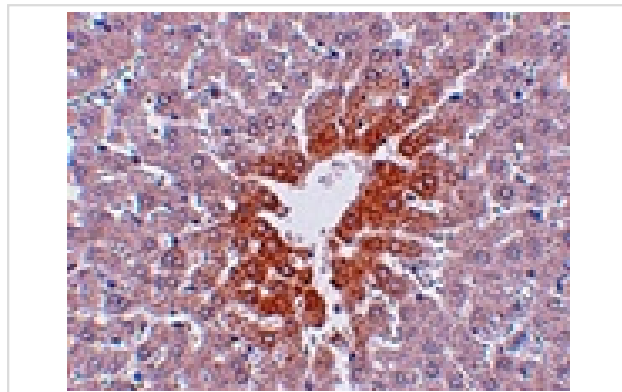
Description

Product Name	JMJD7 Antibody
Host Species	Rabbit
Clonality	Polyclonal
Purification	Affinity chromatography purified via peptide column
Applications	ELISA WB IHC
Species Reactivity	Hu Ms Rt
Immunogen Type	Peptide
Immunogen Description	Raised against an 18 amino acid peptide from near the carboxy terminus of human JMJD7.
Target Name	JMJD7
Other Names	Jumonji domain-containing protein 7, JmjC domain-containing protein 7
Accession No.	P0C870
Concentration	1mg/ml
Formulation	Supplied in PBS containing 0.02% sodium azide.
Storage	Can be stored at -20°C, stable for one year. As with all antibodies care should be taken to avoid repeated freeze thaw cycles. Antibodies should not be exposed to prolonged high temperatures.

Images



Western blot analysis of JMJD7 in 3T3 cell lysate with JMJD7 antibody at 1 ug/mL.



Immunohistochemistry of JMJD7 in rat liver tissue with JMJD7 antibody at 2.5 ug/mL.

Background

The jumonji domain-containing protein (JMJD) family is defined by the presence of the JmjC domain that is observed in several diverse species. While several JMJD proteins have been identified as being involved in chromatin regulation, histone demethylation and development, the function of JMJD7 has not been identified. JMJD7 was initially thought to be a novel splice form of the phospholipase PLA2G4B which is located downstream of JMJD7 as most tissues express a read-through transcript of the two genes.

Note: This product is for in vitro research use only and is not intended for use in humans or animals.