

VLK Antibody

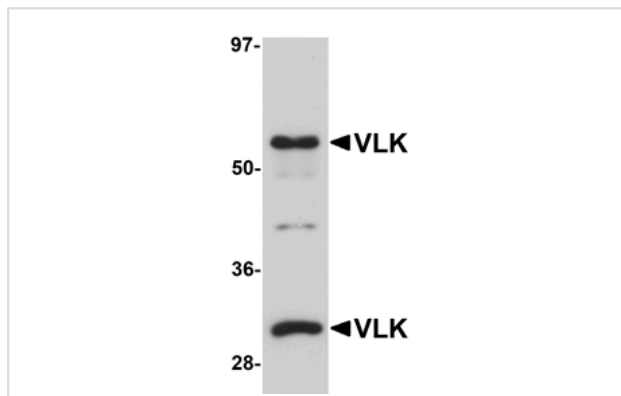
Catalog No: #25033

Orders: order@signalwayantibody.comSupport: tech@signalwayantibody.com

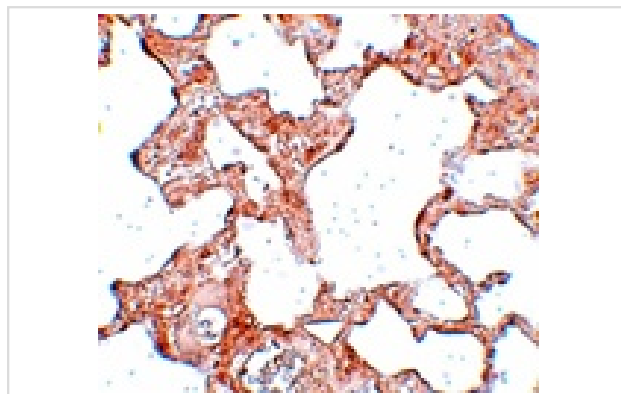
Description

Product Name	VLK Antibody
Host Species	Rabbit
Clonality	Polyclonal
Purification	Affinity chromatography purified via peptide column
Applications	ELISA WB IHC
Species Reactivity	Hu Ms Rt
Immunogen Type	Peptide
Immunogen Description	Raised against a 15 amino acid peptide from near the center of human VLK.
Target Name	VLK
Other Names	Vertebrate lonesome kinase, protein kinase domain containing cytoplasmic homolog, PKDCC, SGK439
Accession No.	BAH66379
Concentration	1mg/ml
Formulation	Supplied in PBS containing 0.02% sodium azide.
Storage	Can be stored at -20°C, stable for one year. As with all antibodies care should be taken to avoid repeated freeze thaw cycles. Antibodies should not be exposed to prolonged high temperatures.

Images



Western blot analysis of VLK in human lung tissue lysate with VLK antibody at 1 ug/mL.



Immunohistochemistry of VLK in rat lung tissue with VLK antibody at 2.5 ug/mL.

Background

VLK was identified as a novel protein kinase that was induced after the differentiation of cultured embryonic stem cells into mesendoderm. It has no homologs in invertebrates, but is highly conserved in vertebrate species although it does not belong to any known protein kinase groups. VLK is initially expressed in E-cadherin-positive anterior visceral endoderm and mesendoderm, but its expression is later confined to E-cadherin-negative mesenchyme. It is enriched in the Golgi apparatus and is thought to regulate the rate of protein export from the Golgi. Targeted disruption of VLK in mice leads to a defect in lung development and neonatal lethality. It has been suggested that mutations in VLK may be associated with the allergic condition atopy.

Note: This product is for in vitro research use only and is not intended for use in humans or animals.