

SYNGR1 Antibody

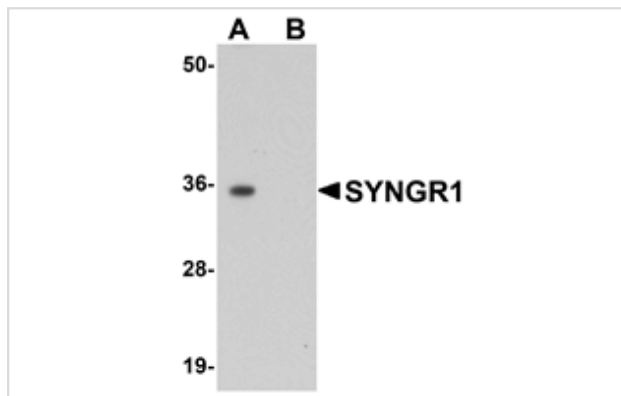
Catalog No: #25034

Orders: order@signalwayantibody.comSupport: tech@signalwayantibody.com

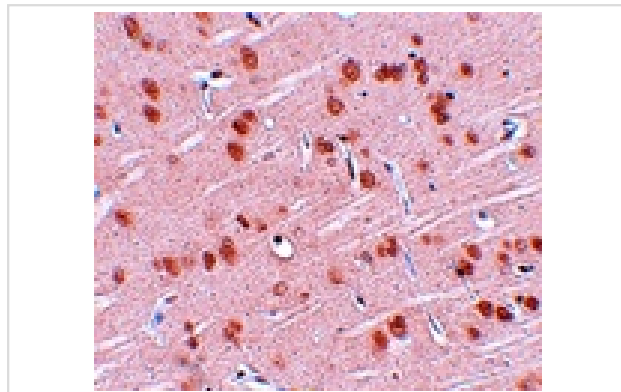
Description

Product Name	SYNGR1 Antibody
Host Species	Rabbit
Clonality	Polyclonal
Purification	Affinity chromatography purified via peptide column
Applications	ELISA WB IHC
Species Reactivity	Hu Ms Rt
Immunogen Type	Peptide
Immunogen Description	Raised against a 16 amino acid peptide from near the center of human SYNGR1.
Target Name	SYNGR1
Other Names	Synaptogyrin-1
Accession No.	CAA05322
Concentration	1mg/ml
Formulation	Supplied in PBS containing 0.02% sodium azide.
Storage	Antibody can be stored at 4°C up to one year. Antibodies should not be exposed to prolonged high temperatures.

Images



Western blot analysis of SYNGR1 in rat brain tissue lysate with SYNGR1 antibody at 1 ug/mL in (A) the absence and (B) the presence of blocking peptide.



Immunohistochemistry of SYNGR1 in rat brain tissue with SYNGR1 antibody at 2.5 ug/mL.

Background

Synaptogyrins comprise a family of tyrosine-phosphorylated membrane proteins with two neuronal (SYNGR1 and SYNGR3) and one ubiquitous (SYNGR2) members. SYNGR1 and -3 are synaptic vesicle proteins, residing in some cases on the same synaptic vesicle, and are thought to be involved in the regulation of neurotransmitter release. SYNGR2, by contrast, is absent from synaptic vesicles. The role and localization of a fourth synaptogyrin, SYNGR4, is unclear. The gene for SYNGR1 is located at chromosome 22q13, a region linked to schizophrenia; however, there is mixed evidence suggesting that mutations in SYNGR1 might be associated with schizophrenia.

Note: This product is for in vitro research use only and is not intended for use in humans or animals.