

RNF8 Antibody

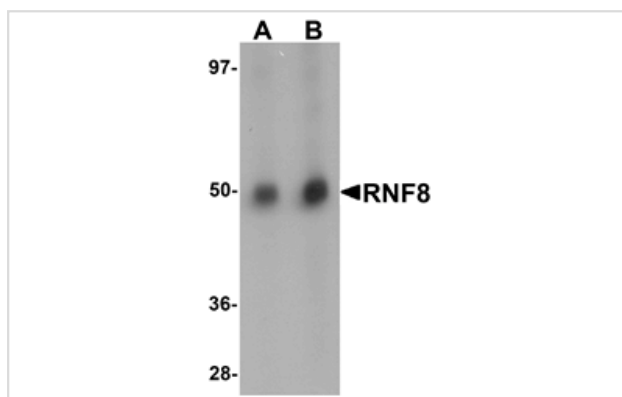
Catalog No: #25121

Orders: order@signalwayantibody.comSupport: tech@signalwayantibody.com

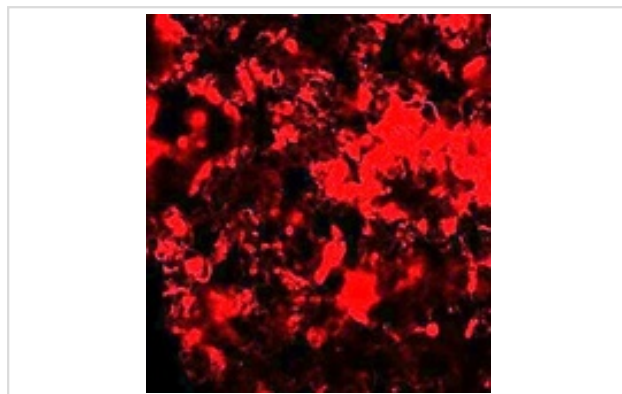
Description

Product Name	RNF8 Antibody
Host Species	Rabbit
Clonality	Polyclonal
Purification	Affinity chromatography purified via peptide column
Applications	ELISA WB IF
Species Reactivity	Hu Ms Rt
Immunogen Type	Peptide
Immunogen Description	Raised against a 14 amino acid peptide near the carboxy terminus of human RNF8.
Target Name	RNF8
Other Names	Ring finger protein 8
Accession No.	NP_003949
Concentration	1mg/ml
Formulation	Supplied in PBS containing 0.02% sodium azide.
Storage	Antibody can be stored at 4°C up to one year. Antibodies should not be exposed to prolonged high temperatures.

Images



Western blot analysis of RNF8 in human lung tissue lysate with RNF8 antibody at (A) and (B) 2 ug/mL.



Immunofluorescence of RNF8 in rat lung tissue with RNF8 antibody at 20 ug/mL.

Background

RNF8 was identified as a ubiquitin ligase (E3) containing a RING finger motif and a FHA domain. This protein has been shown to interact with several class II ubiquitin-conjugating enzymes including UBE2E1/UBCH6, UBE2E2, and UBE2E3. RNF8 assembles at DNA double-strand breaks (DSBs) via interactions through the FHA domain with the adaptor protein MDC1, resulting in an increase in DSB-associated H2A histone ubiquitinations mediated by the associated ubiquitin ligase RNF168 followed by the accumulation of 53BP1 and BRCA1 repair proteins. Together with RNF168, RNF8 plays an integral part of class switch recombination in B cells, allowing the production of several classes of antibodies, through the recruitment of 53BP1 and BRCA1 to the DSB sites.

Note: This product is for in vitro research use only and is not intended for use in humans or animals.