

WDR92 Antibody

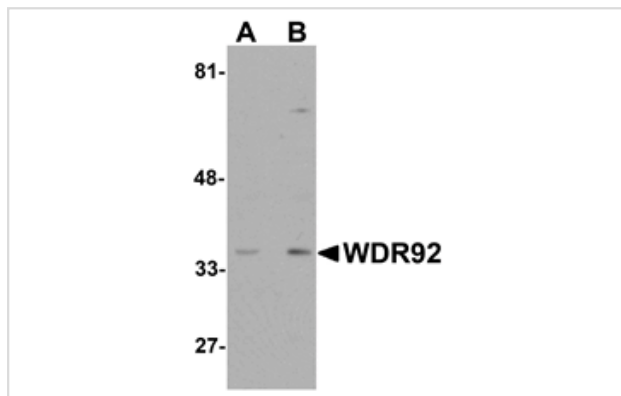
Catalog No: #25170

Orders: order@signalwayantibody.comSupport: tech@signalwayantibody.com

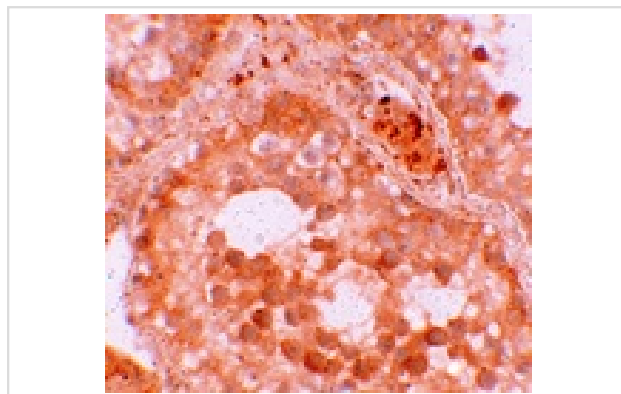
Description

Product Name	WDR92 Antibody
Host Species	Rabbit
Clonality	Polyclonal
Purification	Affinity chromatography purified via peptide column
Applications	ELISA WB IHC
Species Reactivity	Hu Ms
Immunogen Type	Peptide
Immunogen Description	Raised against a 21 amino acid peptide near the center of human WDR92.
Target Name	WDR92
Other Names	WD repeat-containing protein 92, monad
Accession No.	NP_612467
Concentration	1mg/ml
Formulation	Supplied in PBS containing 0.02% sodium azide.
Storage	Can be stored at -20°C, stable for one year. As with all antibodies care should be taken to avoid repeated freeze thaw cycles. Antibodies should not be exposed to prolonged high temperatures.

Images



Western blot analysis of WDR92 in human kidney tissue lysate with WDR92 antibody at (A) 1 and (B) 2 ug/mL.



Immunohistochemistry of WDR92 in human testis tissue with WDR92 antibody at 10 ug/mL.

Background

WD40 repeats are a common structural module in eukaryotic proteins, and proteins containing WD40 domains have a wide range of functions, including signal transduction, cell cycle regulation, RNA splicing, and transcription. One such protein, WDR92, also known as monad, contains two WD40 repeats is widely expressed in human tissues, especially testis. Overexpression of this protein or its binding partner RNA polymerase II-associated protein 3 (RPAP3) potentiated apoptosis and caspase-3 activation induced by TNF- α and cycloheximide, suggesting that WDR92, together with RPAP3, may function as a novel modulator of apoptosis.

Note: This product is for in vitro research use only and is not intended for use in humans or animals.