

## NOD1 Antibody

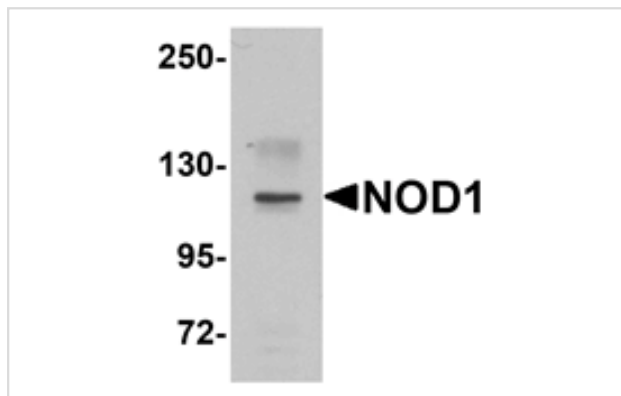
Catalog No: #25174

Orders: [order@signalwayantibody.com](mailto:order@signalwayantibody.com)Support: [tech@signalwayantibody.com](mailto:tech@signalwayantibody.com)

## Description

Product Name	NOD1 Antibody
Host Species	Rabbit
Clonality	Polyclonal
Purification	Affinity chromatography purified via peptide column
Applications	ELISA WB
Species Reactivity	Hu Ms Rt
Immunogen Type	Peptide
Immunogen Description	Raised against a 16 amino acid peptide near the carboxy end of human NOD1.
Target Name	NOD1
Other Names	Nucleotide-binding oligomerization domain containing 1, CARD4, NLRC1, CLR7.1
Accession No.	ADD28350
Concentration	1mg/ml
Formulation	Supplied in PBS containing 0.02% sodium azide.
Storage	Can be stored at -20°C, stable for one year. As with all antibodies care should be taken to avoid repeated freeze thaw cycles. Antibodies should not be exposed to prolonged high temperatures.

## Images



Western blot analysis of NOD1 in EL4 cell lysate with NOD1 antibody at 1 ug/mL.

## Background

NOD1 is a member of the NOD (nucleotide-binding oligomerization domain) family, a group of proteins that are involved in innate immune defense. NOD1 contains an N-terminal caspase recruitment domain (CARD), a centrally located nucleotide-binding domain (NBD), and ten tandem leucine-rich repeats (LRRs) in its C-terminus. The CARD is involved in apoptotic signaling, and NOD1 activates caspase-9 and NF- $\kappa$ B. LRRs participate in protein-protein interactions, and mutations in the NBD may affect the process of oligomerization and subsequent function of the LRR domain. This protein is an intracellular pattern-recognition receptor (PRR) that initiates inflammation in response to a subset of bacteria through the detection of bacterial diaminopimelic acid.

---

Note: This product is for in vitro research use only and is not intended for use in humans or animals.