

## AXIN1 Antibody

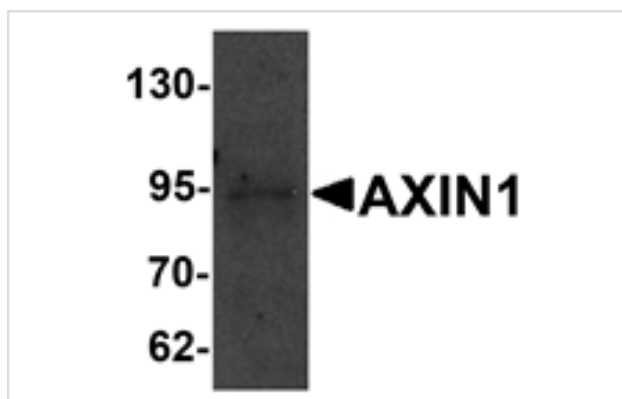
Catalog No: #25201

Orders: [order@signalwayantibody.com](mailto:order@signalwayantibody.com)Support: [tech@signalwayantibody.com](mailto:tech@signalwayantibody.com)

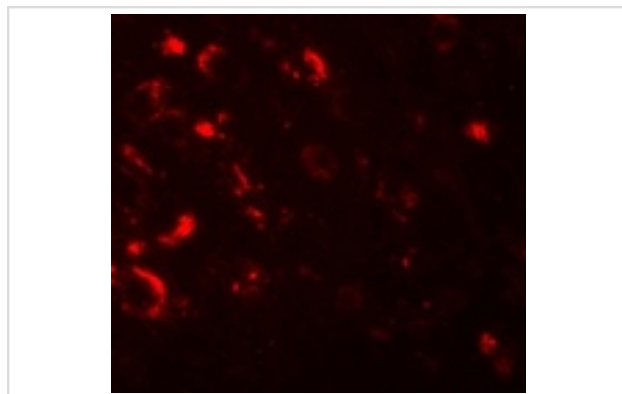
## Description

Product Name	AXIN1 Antibody
Host Species	Rabbit
Clonality	Polyclonal
Purification	Affinity chromatography purified via peptide column
Applications	ELISA WB ICC
Species Reactivity	Hu Ms Rt
Immunogen Type	Peptide
Immunogen Description	Raised against a 14 amino acid peptide near the carboxy terminus of human AXIN1.
Target Name	AXIN1
Other Names	AXIN
Accession No.	AAC51624
Concentration	1mg/ml
Formulation	Supplied in PBS containing 0.02% sodium azide.
Storage	Can be stored at -20°C, stable for one year. As with all antibodies care should be taken to avoid repeated freeze thaw cycles. Antibodies should not be exposed to prolonged high temperatures.

## Images



Western blot analysis of AXIN1 in SK-N-SH cell lysate with AXIN1 antibody at 1 ug/mL.



Immunofluorescence of AXIN1 in human brain tissue with AXIN1 antibody at 20 ug/mL.

## Background

---

AXIN1 is a cytoplasmic protein which contains a regulation of G-protein signaling (RGS) domain and a dishevelled and axin (DIX) domain and is thought to function as a negative regulator of the WNT signaling pathway that regulates embryonic axis formation. AXIN1 interacts with adenomatous polyposis coli (APC), beta-catenin, glycogen synthase kinase 3 beta, forming a tetrameric complex resulting in the regulation of the stabilization of beta-catenin. Mutations in the AXIN1 gene have been associated various carcinomas, indicating that it also functions as a tumor suppressor.

---

Note: This product is for in vitro research use only and is not intended for use in humans or animals.