

## CXXC5 Antibody

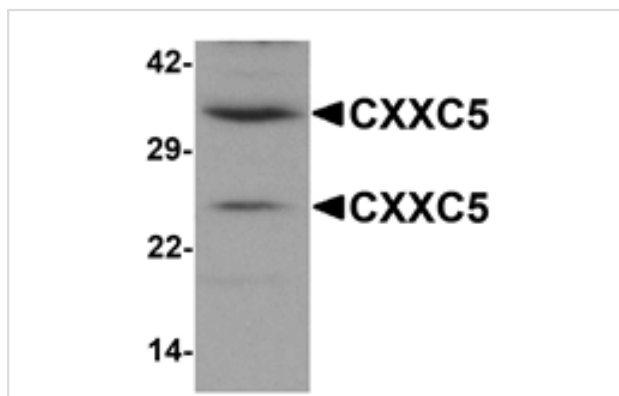
Catalog No: #25239

Orders: [order@signalwayantibody.com](mailto:order@signalwayantibody.com)Support: [tech@signalwayantibody.com](mailto:tech@signalwayantibody.com)

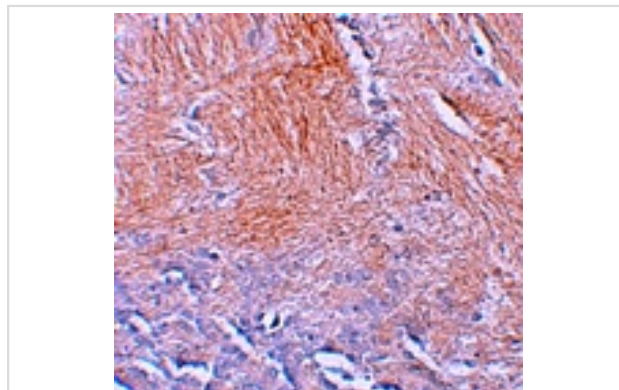
## Description

Product Name	CXXC5 Antibody
Host Species	Rabbit
Clonality	Polyclonal
Purification	Affinity chromatography purified via peptide column
Applications	ELISA WB IHC
Species Reactivity	Hu Ms Rt
Specificity	At least two isoforms of CXXC5 are known to exist. CXXC5 antibody is predicted to not cross-react with other CXXC protein family members.
Immunogen Type	Peptide
Immunogen Description	Raised against a 15 amino acid peptide near the amino terminus of human CXXC5.
Target Name	CXXC5
Other Names	CXXC-type zinc finger protein 5, CF5, WID, RINF, HSPC195
Accession No.	NP_057547
Concentration	1mg/ml
Formulation	Supplied in PBS containing 0.02% sodium azide.
Storage	Can be stored at -20°C, stable for one year. As with all antibodies care should be taken to avoid repeated freeze thaw cycles. Antibodies should not be exposed to prolonged high temperatures.

## Images



Western blot analysis of CXXC5 in human brain tissue lysate with CXXC5 antibody at 1 ug/mL.



Immunohistochemistry of CXXC5 in human brain tissue with CXXC5 antibody at 2.5 ug/mL.

## Background

---

CXXC5 is zinc finger protein closely related to the DVL1-binding protein CXXC4 (also known as Idax), and like CXXC4 is thought to modulate the Wnt signaling pathway during development. CXXC5 is upregulated in neural stem cells upon BMP4 stimulation, leading to decreased levels of the Wnt-signaling target AXIN2 and facilitated the response of the stem cells to Wnt3a. Recent reports suggest CXXC5 transcription is activated by the Wilms tumor 1 (WT1) transcription factor, and together are involved in the WNT/beta-catenin pathway and play a role in embryonic kidney development.

---

Note: This product is for in vitro research use only and is not intended for use in humans or animals.