

## VPS39 Antibody

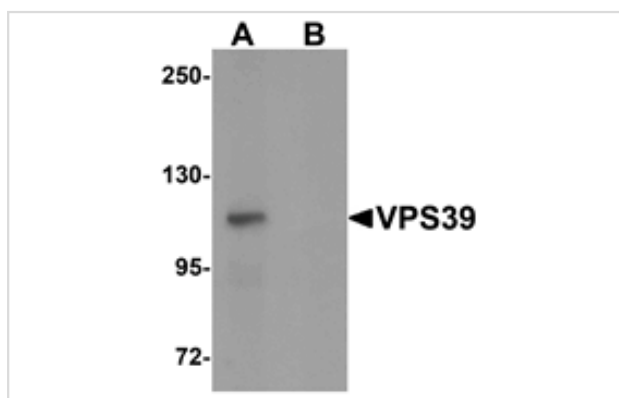
Catalog No: #25263

Orders: [order@signalwayantibody.com](mailto:order@signalwayantibody.com)Support: [tech@signalwayantibody.com](mailto:tech@signalwayantibody.com)

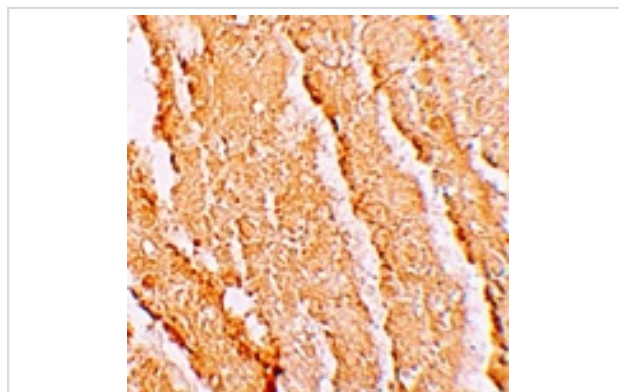
## Description

|                       |   |
|-----------------------|---|
| Product Name          | VPS39 Antibody  |
| Host Species          | Rabbit  |
| Clonality             | Polyclonal  |
| Purification          | Affinity chromatography purified via peptide column   |
| Applications          | ELISA WB IHC  |
| Species Reactivity    | Hu Ms Rt  |
| Specificity           | At least four isoforms of VPS39 are known to exist; this antibody will detect all four. VPS39 antibody is predicted not to cross-react with TRAP1.  |
| Immunogen Type        | Peptide   |
| Immunogen Description | Raised against a 18 amino acid peptide near the carboxy terminus of human VPS39.  |
| Target Name           | VPS39   |
| Other Names           | Vacuolar sorting protein 39, Trap1-like protein, TLP, VAM6, hVam6p  |
| Accession No.         | AAQ05978  |
| Concentration         | 1mg/ml  |
| Formulation           | Supplied in PBS containing 0.02% sodium azide.  |
| Storage               | Can be stored at -20°C, stable for one year. As with all antibodies care should be taken to avoid repeated freeze thaw cycles. Antibodies should not be exposed to prolonged high temperatures. |

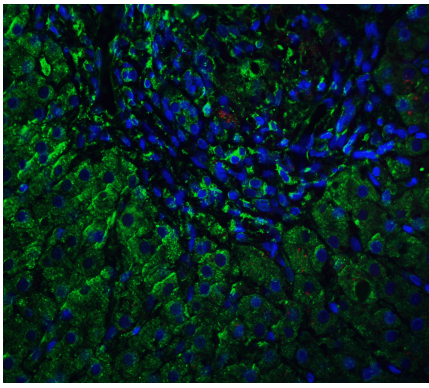
## Images



Western blot analysis of VPS39 in rat liver tissue lysate with VPS39 antibody at 0.5 ug/mL in (A) the absence and (B) the presence of blocking peptide.



Immunohistochemistry of VPS39 in mouse liver tissue with VPS39 antibody at 5 ug/mL.



Immunofluorescence of VPS39 in human liver tissue with VPS39 antibody at 5  $\mu$ g/ml.

## Background

VPS39 is the mammalian homolog of the yeast vacuolar protein VAM6, that in mammals, promotes lysosome clustering and fusion in vivo. VPS39 is also thought to modulate the TGF-beta response by coupling the TGF-beta receptor complex to the Smad pathway. Similar to the related protein TRAP1, the VPS39 protein is essential for early embryonic development, with mice lacking VPS39 dying at or before E6.5.

Note: This product is for in vitro research use only and is not intended for use in humans or animals.