

## AFAP1L Antibody

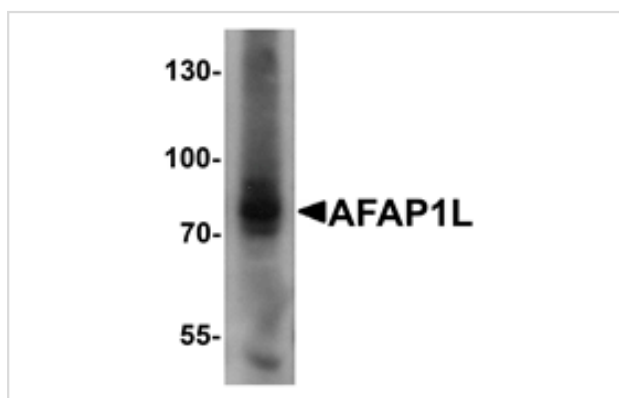
Catalog No: #25381

Orders: [order@signalwayantibody.com](mailto:order@signalwayantibody.com)Support: [tech@signalwayantibody.com](mailto:tech@signalwayantibody.com)

## Description

Product Name	AFAP1L Antibody
Host Species	Rabbit
Clonality	Polyclonal
Purification	Affinity chromatography purified via peptide column
Applications	ELISA WB
Species Reactivity	Hu Ms
Specificity	At least four isoforms of AFAP1L1 are known to exist. This antibody is predicted to not cross-react with other AFAP family members.
Immunogen Type	Peptide
Immunogen Description	Raised against a 19 amino acid peptide near the amino terminus of human AFAP1L1.
Target Name	AFAP1L
Other Names	Actin filament associated protein 1-like 1
Accession No.	NP_689619
Concentration	1mg/ml
Formulation	Supplied in PBS containing 0.02% sodium azide.
Storage	Can be stored at -20°C, stable for one year. As with all antibodies care should be taken to avoid repeated freeze thaw cycles. Antibodies should not be exposed to prolonged high temperatures.

## Images



Western blot analysis of AFAP1L in A549 cell lysate with AFAP1L1 antibody at 1 ug/mL.

## Background

The actin filament-associated protein 1 (AFAP1)-like 1 protein is one of three members in the AFAP1 family of adaptor proteins. Like AFAP1, AFAP1L1 is an actin binding protein that has a role in actin cytoskeleton arrangement, but AFAP1L1 is thought to have a unique function distinct from AFAP1. AFAP1L1 colocalizes with cortactin and localizes to invadosomes, highly dynamic, actin-rich adhesion structures harboring metalloproteases, suggesting that AFAP1L1 affects invadosome formation (1, 4). Recent reports suggest that AFAP1L1 can be used as a prognostic marker for spindle cell sarcomas.

---

Note: This product is for in vitro research use only and is not intended for use in humans or animals.