

## PIWI-L2 Antibody

Catalog No: #25385

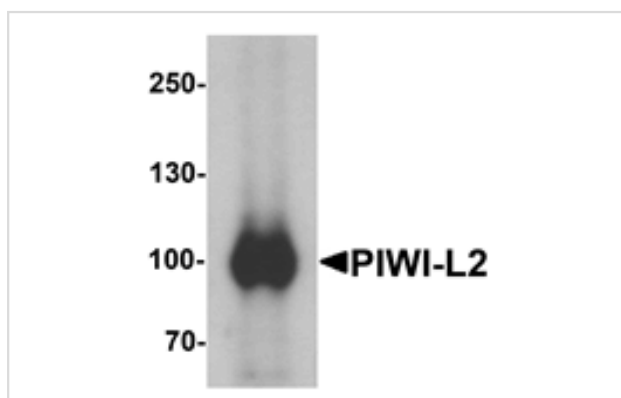
Orders: order@signalwayantibody.com

Support: tech@signalwayantibody.com

## Description

Product Name	PIWI-L2 Antibody
Host Species	Rabbit
Clonality	Polyclonal
Purification	Affinity chromatography purified via peptide column
Applications	ELISA WB
Species Reactivity	Hu Ms
Specificity	At least three isoforms of PIWI-L2 are known to exist; this antibody will only detect the two longest isoforms. PIWI-L2 antibody is predicted to not cross-react with other PIWI protein family members.
Immunogen Type	Peptide
Immunogen Description	Raised against a 17 amino acid peptide near the center of human PIWI-L2.
Target Name	PIWI-L2
Other Names	PIWI-like 2, PIWIL2, PIWIL1L, HILI, MILI
Accession No.	NP_00129193
Concentration	1mg/ml
Formulation	Supplied in PBS containing 0.02% sodium azide.
Storage	Can be stored at -20°C, stable for one year. As with all antibodies care should be taken to avoid repeated freeze thaw cycles. Antibodies should not be exposed to prolonged high temperatures.

## Images



Western blot analysis of PIWI-L2 in HepG2 cell lysate with PIWI-L1 antibody at 1 ug/mL.

## Background

PIWI-L2 is a member of the PIWI subfamily of Argonaute proteins, evolutionarily conserved proteins containing both PAZ and Piwi motifs that are crucial for the biogenesis and function of small non-coding RNAs and play important roles in stem cell self-renewal, RNA silencing, and translational regulation in diverse organisms. PIWI-L2 has been implicated in multiple roles including stem cell self-renewal and is highly expressed in many breast cancers. In these tumors, PIWI-L2 silences the expression of STAT3, a regulator of Bcl-XL and cyclin D1, allowing the proliferation and survival of breast cancer stem cells. Recent studies have shown that overexpression of PIWI-like proteins are potential biomarkers for colon and other cancers.

---

Note: This product is for in vitro research use only and is not intended for use in humans or animals.