

YPEL5 Antibody

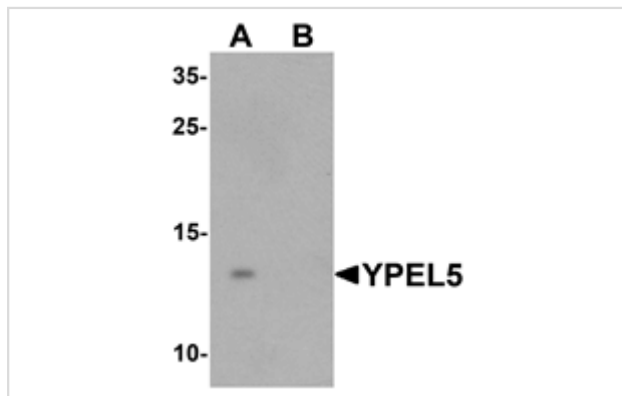
Catalog No: #25466

Orders: order@signalwayantibody.comSupport: tech@signalwayantibody.com

Description

Product Name	YPEL5 Antibody
Host Species	Rabbit
Clonality	Polyclonal
Purification	Affinity chromatography purified via peptide column
Applications	ELISA WB
Species Reactivity	Hu Ms
Immunogen Type	Peptide
Immunogen Description	14 amino acid peptide near the amino terminus of human YPEL5.
Target Name	YPEL5
Other Names	Yippee-like 5, CGI-127
Accession No.	NP_057145
Concentration	1mg/ml
Formulation	PBS containing 0.02% sodium azide.
Storage	Store at 4°C for three months and -20°C, stable for up to one year.

Images



Western blot analysis of YPEL5 in A-20 cell lysate with YPEL5 antibody at 1 ug/mL in (A) the absence and (B) the presence of blocking peptide.

Note: This product is for in vitro research use only and is not intended for use in humans or animals.