

## WDR18 Antibody

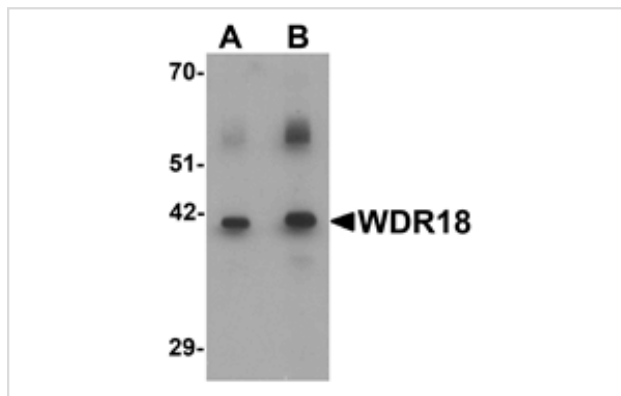
Catalog No: #25480

Orders: [order@signalwayantibody.com](mailto:order@signalwayantibody.com)Support: [tech@signalwayantibody.com](mailto:tech@signalwayantibody.com)

## Description

Product Name	WDR18 Antibody
Host Species	Rabbit
Clonality	Polyclonal
Purification	Affinity chromatography purified via peptide column
Applications	ELISA WB
Species Reactivity	Hu Ms Rt
Specificity	WDR18 antibody is predicted to not cross-react with other WDR family members.
Immunogen Type	Peptide
Immunogen Description	17 amino acid peptide near the carboxy terminus of human WDR18.
Target Name	WDR18
Other Names	WD repeat domain 18, WD repeat-containing protein 18
Accession No.	NP_077005
Concentration	1mg/ml
Formulation	PBS containing 0.02% sodium azide.
Storage	Store at 4°C for three months and -20°C, stable for up to one year.

## Images



Western blot analysis of WDR18 in rat lung tissue lysate with WDR18 antibody at (A) 0.5 and (B) 1 ug/ml.

Note: This product is for in vitro research use only and is not intended for use in humans or animals.