

WDR5 Antibody

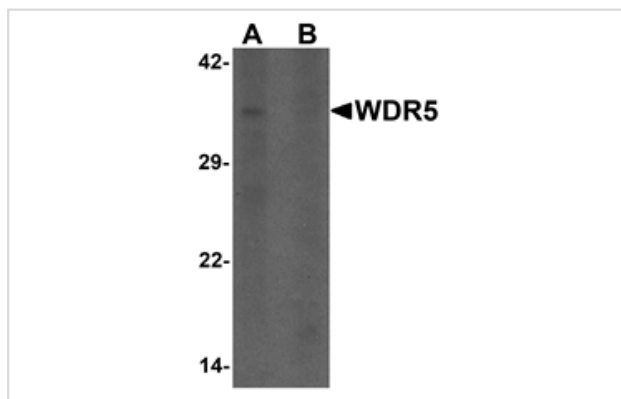
Catalog No: #25482

Orders: order@signalwayantibody.comSupport: tech@signalwayantibody.com

Description

| | |
|-----------------------|---|
| Product Name | WDR5 Antibody |
| Host Species | Rabbit |
| Clonality | Polyclonal |
| Purification | Affinity chromatography purified via peptide column |
| Applications | ELISA WB |
| Species Reactivity | Hu |
| Specificity | WDR5 antibody is human specific. WDR5 antibody is predicted to not cross-react with other WDR family members. |
| Immunogen Type | Peptide |
| Immunogen Description | 19 amino acid peptide near the amino terminus of human WDR5. |
| Target Name | WDR5 |
| Other Names | WD repeat domain 5, WD repeat-containing protein 5, SWD3, BIG-3 |
| Accession No. | NP_060058 |
| Concentration | 1mg/ml |
| Formulation | PBS containing 0.02% sodium azide. |
| Storage | Store at 4°C for three months and -20°C, stable for up to one year. |

Images



Western blot analysis of WDR5 in 293 cell lysate with WDR5 antibody at 1 ug/ml in (A) the absence and (B) the presence of blocking peptide.

Note: This product is for in vitro research use only and is not intended for use in humans or animals.