

ZNF687 Antibody

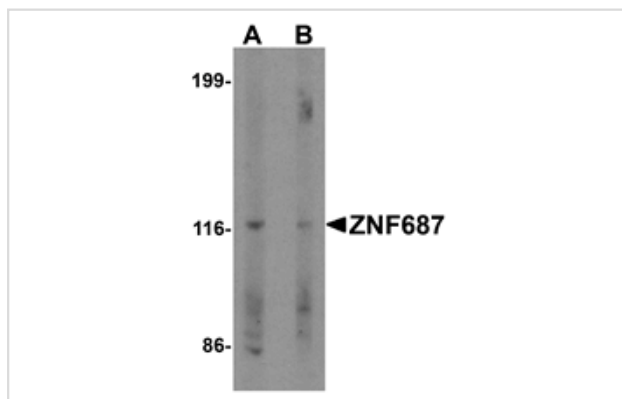
Catalog No: #25492

Orders: order@signalwayantibody.comSupport: tech@signalwayantibody.com

Description

| | |
|-----------------------|--|
| Product Name | ZNF687 Antibody |
| Host Species | Rabbit |
| Clonality | Polyclonal |
| Purification | Affinity chromatography purified via peptide column |
| Applications | ELISA WB |
| Species Reactivity | Hu |
| Specificity | ZNF687 antibody is human specific. At least three isoforms of ZNF687 are known to exist; this antibody will only detect the largest isoform. |
| Immunogen Type | Peptide |
| Immunogen Description | 17 amino acid peptide near the carboxy terminus of human ZNF687. |
| Target Name | ZNF687 |
| Other Names | Zinc finger protein 687, RP11-126K1.3 |
| Accession No. | NP_065883 |
| Concentration | 1mg/ml |
| Formulation | PBS containing 0.02% sodium azide. |
| Storage | Store at 4°C for three months and -20°C, stable for up to one year. |

Images



Western blot analysis of ZNF687 in Jurkat cell lysate with ZNF687 antibody at 0.5 ug/ml in (A) the absence and (B) the presence of blocking peptide.

Note: This product is for in vitro research use only and is not intended for use in humans or animals.