

CLAUDIN4 Antibody

Catalog No: #25538

Orders: order@signalwayantibody.comSupport: tech@signalwayantibody.com

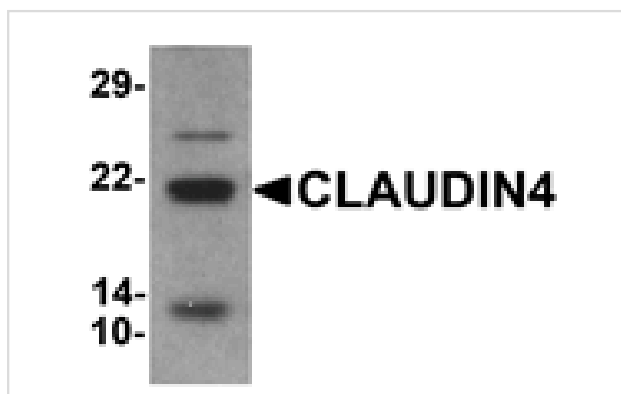
Description

Product Name	CLAUDIN4 Antibody
Host Species	Rabbit
Clonality	Polyclonal
Purification	Affinity chromatography purified via peptide column
Applications	ELISA WB
Species Reactivity	Hu Ms Rt
Specificity	At least four isoforms of CLAUDIN4 are known to exist; CLAUDIN4 antibody will detect all four isoforms
Immunogen Type	Peptide
Immunogen Description	17 amino acid peptide near the carboxy terminus of human CLAUDIN4.
Target Name	CLAUDIN4
Other Names	Claudin-4, CLDN4, CPER, CPE-R, CPETR, CPETR1, WBSCR8
Accession No.	NP_001296
Concentration	1mg/ml
Formulation	PBS containing 0.02% sodium azide.
Storage	Store at 4°C for three months and -20°C, stable for up to one year.

Application Details

Predicted MW: 23kd

Images



Western blot analysis of CLAUDIN4 in human colon tissue lysate with CLAUDIN4 antibody at 1 ug/ml

Note: This product is for in vitro research use only and is not intended for use in humans or animals.