

## PP1A(N-term) Monoclonal Antibody

Catalog No: #27058



Package Size: #27058-1 50ul #27058-2 100ul

Orders: order@signalwayantibody.com

Support: tech@signalwayantibody.com

## Description

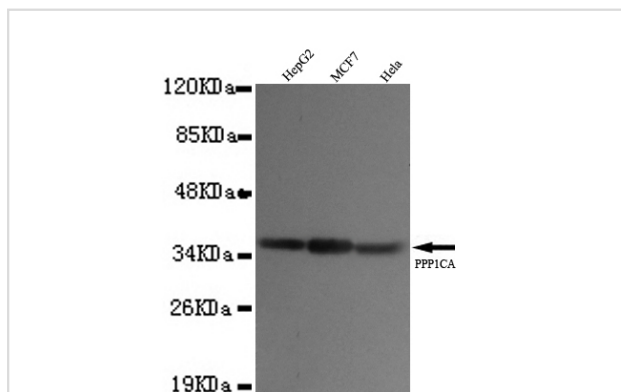
Product Name	PP1A(N-term) Monoclonal Antibody
Host Species	Mouse
Clonality	Monoclonal
Isotype	IgG1
Purification	Purified by antigen-affinity chromatography.
Applications	WB ICC
Species Reactivity	Hu P Rt Ms Rb
Immunogen Type	Recombinant protein
Immunogen Description	Recombinant fragment, corresponding to amino acids 2-286aa of human PPP1CA (N-terminus).
Target Name	PP1A
Other Names	serine/threonine-protein phosphatase PP1-alpha catalytic subunit □ protein phosphatase 1, catalytic subunit, alpha isoform □ serine/threonine protein phosphatase PP1-alpha 1 catalytic subunit
Accession No.	UniProt:P62136 NCBI Gene ID:5499
Formulation	Purified mouse monoclonal in buffer containing 0.1M Tris-Glycine (pH 7.4, 150 mM NaCl) with 0.2% sodium azide, 50% glycerol
Storage	store at -20°C

## Application Details

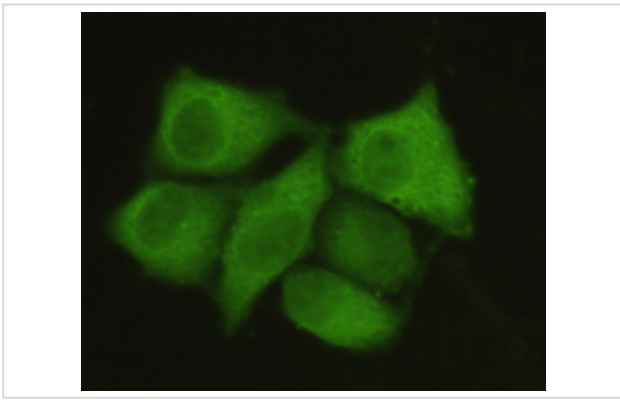
Predicted MW: 37kd

Western blotting: 1:1000

## Images



1:3000 dilution of this antibody detected PPP1CA on 40ug of cell lysates



HeLa cells using anti- PPP1CA(N-terminus)antibody diluted 1:50

---

Note: This product is for in vitro research use only and is not intended for use in humans or animals.