

SMYD2 Monoclonal Antibody

Catalog No: #27084

Package Size: #27084-1 50ul #27084-2 100ul

Orders: order@signalwayantibody.com

Support: tech@signalwayantibody.com

Description

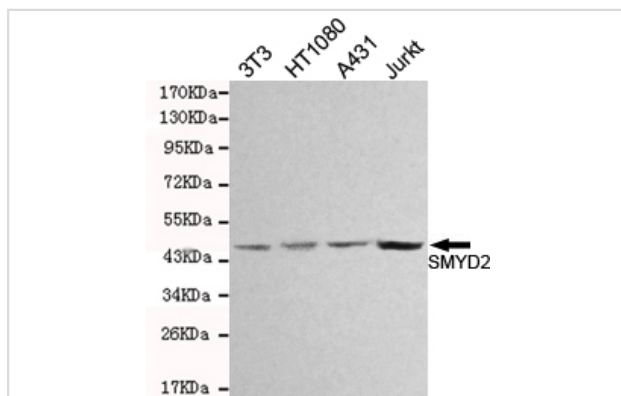
Product Name	SMYD2 Monoclonal Antibody
Host Species	Mouse
Clonality	Monoclonal
Clone No.	1G10-E11-H9
Isotype	IgG2b
Applications	ELISA WB
Species Reactivity	Hu Ms
Immunogen Type	Recombinant protein
Immunogen Description	Purified recombinant human SMYD2 protein fragments expressed in E.coli.
Target Name	SMYD2
Other Names	KMT3C, HSKM-B, ZMYND14
Formulation	ascites

Application Details

Predicted MW: 50kd

Western blotting: 1:1000

Images



Western blot detection of SMYD2 in 3T3, HT1080

Background

SET domain-containing proteins, such as SMYD2, catalyze lysine methylation. Protein-lysine N-methyltransferase that methylates both histones and non-histone proteins. Specifically methylates histone H3 'Lys-4' (H3K4me) and dimethylates histone H3 'Lys-36' (H3K36me2). Has also methyltransferase activity toward non-histone proteins.

Note: This product is for in vitro research use only and is not intended for use in humans or animals.