

## CKMT2 Monoclonal Antibody

Catalog No: #27124

Package Size: #27124-1 50ul #27124-2 100ul

Orders: order@signalwayantibody.com

Support: tech@signalwayantibody.com

## Description

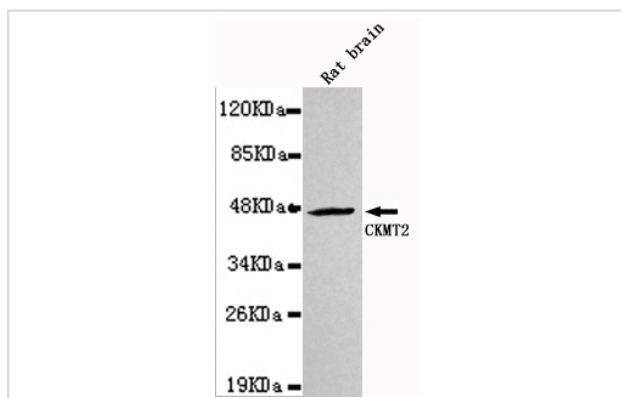
Product Name	CKMT2 Monoclonal Antibody
Host Species	Mouse
Clonality	Monoclonal
Clone No.	3F4-G5-H5
Isotype	IgG2b
Purification	Affinity purified
Applications	ELISA WB
Species Reactivity	Hu D Rt Rb Ms P
Immunogen Type	Recombinant protein
Immunogen Description	Purified recombinant human CKMT2 protein fragments expressed in E.coli.
Target Name	CKMT2
Other Names	SMTCK
Formulation	Purified mouse monoclonal in buffer containing 0.1M Tris-Glycine (pH 7.4, 150 mM NaCl) with 0.2% sodium azide, 50%,glycerol

## Application Details

Predicted MW: 47kd

Western blotting: 1:1000

## Images



Western blot detection of CKMT2 in Rat Brain lysates using CKMT2 antibody (1:1000 diluted).

Predicted band size:47KDa.

Observed band size:47KDa

## Background

Reversibly catalyzes the transfer of phosphate between ATP and various phosphogens (e.g. creatine phosphate). Creatine kinase isoenzymes play a central role in energy transduction in tissues with large, fluctuating energy demands, such as skeletal muscle.

---

Note: This product is for in vitro research use only and is not intended for use in humans or animals.