

# GST-Tag Mouse Monoclonal Antibody

Catalog No: #T509

Package Size: #T509-1 50ul #T509-2 100ul

Orders: [order@signalwayantibody.com](mailto:order@signalwayantibody.com)Support: [tech@signalwayantibody.com](mailto:tech@signalwayantibody.com)

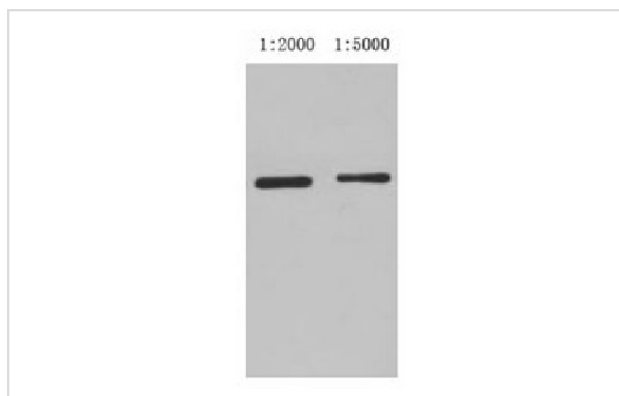
## Description

Product Name	GST-Tag Mouse Monoclonal Antibody
Host Species	Mouse
Clonality	Monoclonal
Purification	Affinity-chromatography
Applications	WB
Specificity	GST-Tag Mouse Monoclonal antibody detects endogenous levels of C-terminal, internal, and N-terminal GST-tagged proteins.
Immunogen Type	Recombinant Protein
Immunogen Description	Full-length GST protein
Target Name	GST-Tag
SDS-PAGE MW	N/A
Formulation	Mouse IgG1 in phosphate buffered saline (without Mg <sup>2+</sup> and Ca <sup>2+</sup> ), pH 7.4, 150mM NaCl, 0.02% sodium azide and 50% glycerol.
Storage	Store at -20 °C. Stable for 12 months from date of receipt

## Application Details

WB: 1:3000~1:10000

## Images



Western blot analysis of GST-tag fusion protein, using GST-Tag Mouse Monoclonal antibody (lane 1: 1:2000; lane 2: 1:5000).

## Published Papers

el at., MLL2 promotes cancer cell lymph node metastasis by interacting with RelA and facilitating STC1 transcription. In Cell Signal on 2020 Jan; by Li H, Li Q, et al.. PMID:31676369, (2020)

[PMID:31676369](https://pubmed.ncbi.nlm.nih.gov/31676369/)

el at., O-GlcNAcylation of PFKFB3 is required for tumor cell proliferation under hypoxia. In Oncogenesis on 2020 Feb 14 by Lei Y, Chen T, et

al..PMID:32060258, , (2020)

[PMID:32060258](#)

el at., Upregulation of ZNF148 in SDHB-deficient gastrointestinal stromal tumor potentiates Forkhead box M1-mediated transcription and promotes tumor cell invasion.

In Cancer Sci on 2020 Apr by Gao X, Ma C, et al..PMID: 32060966, , (2020)

[PMID:32060966](#)

el at., Identification and evaluation of UL36 protein from *Dermacentor silvarum* salivary gland and its interaction with *Anaplasma ovis* VirB10.

In Parasit Vectors on 2020 Feb 27; by Mukhtar MU, Iqbal N, et al..PMID: 32103780, , (2020)

[PMID:32103780](#)

el at., PAK4 Phosphorylates Fumarase and Blocks TGF $\beta$ -Induced Cell Growth Arrest in Lung Cancer Cells. In Cancer Res on 2019 Apr 1 by Chen T, Wang T, et al..PMID:30683654, , (2019)

[PMID:30683654](#)

el at., *Theileria annulata* Cyclophilin1 (TaCyp1) Interacts With Host Cell MED21.In Front Microbiol. On 2018 Dec 3 by Zhao S, Liu J et al..PMID:

30559736 , , (2018)

[PMID:30559736](#)

TaoChen, Jingjie Li et al, el at., PKC $\theta$  phosphorylates MIIP and promotes colorectal cancer metastasis through inhibition of RelA deacetylation., Nature Communications, 8(1):939. doi: 10.1038/s41467-017-01024-2.(2017 Oct 16)

[PMID:29038521](#)

Ting Wang, ε- iujing Yu Li et al el at., GlcNAcylation of fumarase maintains tumour growth under glucose deficiency., Nature Cell Biology, doi:

10.1038/ncb3562(2017)

[PMID:28628081](#)

el at., O-GlcNAcylation of Fumarase Maintains Tumour Growth Under Glucose Deficiency .In Nat Cell Biol ON 2017 Jul by Ting Wang , Qiuqing Yu,et al..PMID: 28628081, , (2017)

[PMID:28628081](#)

el at., PKC $\theta$  phosphorylates MIIP and promotes colorectal cancer metastasis through inhibition of RelA deacetylation.In Nat Commun on 2017 Oct 16 by Tao Chen, Jingjie Li ,et al..PMID: 29038521, , (2017)

[PMID:29038521](#)

---

Note: This product is for in vitro research use only and is not intended for use in humans or animals.