

STAT6(Ab-645) Antibody

Catalog No: #21051



Package Size: #21051-1 50ul #21051-2 100ul

Orders: order@signalwayantibody.com

Support: tech@signalwayantibody.com

Description

Product Name	STAT6(Ab-645) Antibody
Host Species	Rabbit
Clonality	Polyclonal
Purification	Antibodies were produced by immunizing rabbits with synthetic peptide and KLH conjugates. Antibodies were purified by affinity-chromatography using epitope-specific peptide.
Applications	WB IHC
Species Reactivity	Hu
Specificity	The antibody detects endogenous level of total STAT6 protein.
Immunogen Type	Peptide-KLH
Immunogen Description	Peptide sequence around aa.643~647 (P-A-T-I-K) derived from Human STAT6.
Target Name	STAT6
Other Names	IL-4-STAT; STAT6B; STAT6C
Accession No.	Swiss-Prot: P42226NCBI Protein: NP_003144.3
Concentration	1.0mg/ml
Formulation	Supplied at 1.0mg/mL in phosphate buffered saline (without Mg ²⁺ and Ca ²⁺), pH 7.4, 150mM NaCl, 0.02% sodium azide and 50% glycerol.
Storage	Store at -20°C for long term preservation (recommended). Store at 4°C for short term use.

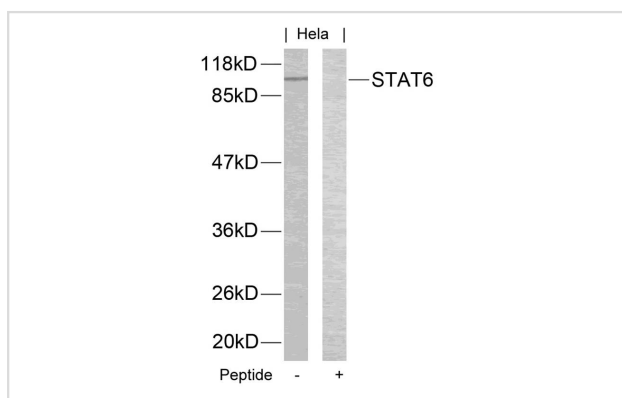
Application Details

Predicted MW: 110kd

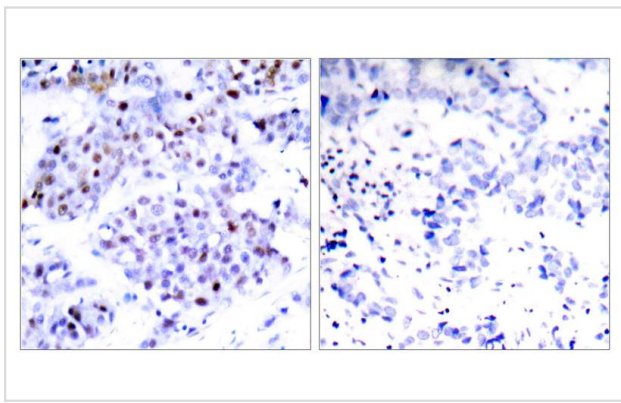
Western blotting: 1:500~1:1000

Immunohistochemistry: 1:50~1:100

Images



Western blot analysis of extracts from HeLa cells using STAT6(Ab-645) Antibody #21051 and the same antibody preincubated with blocking peptide.



Immunohistochemical analysis of paraffin-embedded human breast carcinoma tissue using STAT6(Ab-645) Antibody #21051(left) or the same antibody preincubated with blocking peptide(right).

Background

Carries out a dual function: signal transduction and activation of transcription. Involved in interleukin-4 signalling.

Published Papers

el at., A Guanidine-Rich Regulatory Oligodeoxynucleotide Improves type-2 Diabetes in Obese Mice by Blocking T-cell Differentiation. In EMBO Mol Med on 2012 Oct by Xiang Cheng, Jing Wang, et al..PMID:23027613

, , (2012)

[PMID:23027613](#)

Note: This product is for in vitro research use only and is not intended for use in humans or animals.