

## BAD(Ab-136) Antibody

Catalog No: #21063

Package Size: #21063-1 50ul #21063-2 100ul

Orders: [order@signalwayantibody.com](mailto:order@signalwayantibody.com)Support: [tech@signalwayantibody.com](mailto:tech@signalwayantibody.com)

## Description

Product Name	BAD(Ab-136) Antibody
Host Species	Rabbit
Clonality	Polyclonal
Purification	Antibodies were produced by immunizing rabbits with synthetic peptide and KLH conjugates. Antibodies were purified by affinity-chromatography using epitope-specific peptide.
Applications	WB IHC
Species Reactivity	Hu Ms Rt
Specificity	The antibody detects endogenous level of total BAD protein.
Immunogen Type	Peptide-KLH
Immunogen Description	Peptide sequence around aa.134~138 (S-R-S-A-P) derived from Mouse BAD.
Target Name	BAD
Other Names	Bbc2
Accession No.	Swiss-Prot: Q61337NCBI Protein: NP_031548.1
Concentration	1.0mg/ml
Formulation	Supplied at 1.0mg/mL in phosphate buffered saline (without Mg <sup>2+</sup> and Ca <sup>2+</sup> ), pH 7.4, 150mM NaCl, 0.02% sodium azide and 50% glycerol.
Storage	Store at -20°C for long term preservation (recommended). Store at 4°C for short term use.

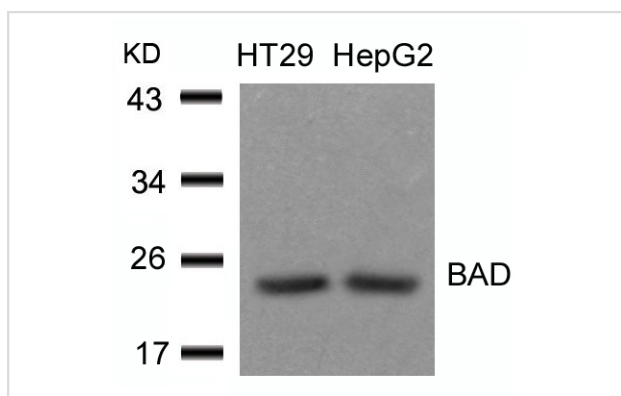
## Application Details

Predicted MW: 23kd

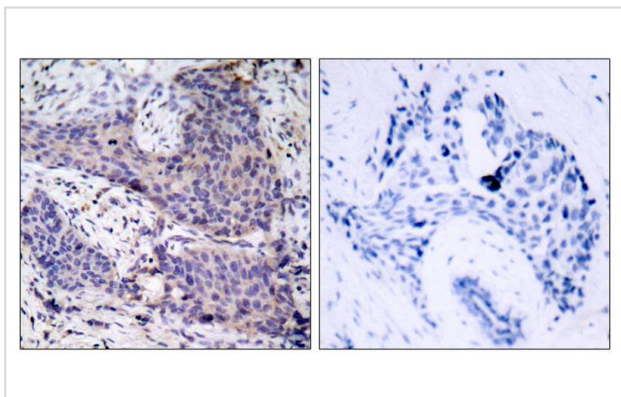
Western blotting: 1:500~1:1000

Immunohistochemistry: 1:50~1:100

## Images



Western blot analysis of extracts from HT29 and HepG2 cells using BAD(Ab-136) Antibody #21063.



Immunohistochemical analysis of paraffin-embedded human breast carcinoma tissue using BAD(Ab-136) Antibody #21063(left) or the same antibody preincubated with blocking peptide(right).

## Background

The protein encoded by BAD gene is a member of the BCL-2 family. BCL-2 family members are known to be regulators of programmed cell death. This protein positively regulates cell apoptosis by forming heterodimers with BCL-xL and BCL-2, and reversing their death repressor activity. Proapoptotic activity of this protein is regulated through its phosphorylation. Protein kinases AKT and MAP kinase, as well as protein phosphatase calcineurin were found to be involved in the regulation of this protein. Alternative splicing of this gene results in two transcript variants which encode the same isoform.

Wang XQ, et al. (2001). J Biol Chem.276 (48): 44504-44511.

Lee YI, et al. (2001). J Biol Chem.276 (20): 16969-16977.

Maiti D, et al. (2001). J Biol Chem.276 (1): 329-333.

## Published Papers

el at., PIWI-Interacting RNA-004800 Is Regulated by S1P Receptor Signaling Pathway to Keep Myeloma Cell Survival.In Front Oncol on 2020 Apr 15

by Ma H, Wang H, et al..PMID: 32351883, , (2020)

[PMID:32351883](#)

el at., miR-137 and miR-197 induce apoptosis and suppress tumorigenicity by targeting MCL-1 in multiple myeloma.In Clin Cancer Res on 2015 May

15 by Yijun Yang , Fei Li et al..PMID:25724519 , , (2015)

[PMID:25724519](#)

el at., Blocking the bFGF/STAT3 interaction through specific signaling pathways induces apoptosis in glioblastoma cells.In J Neurooncol 2014 Oct by

Jingchao Wu , Xuequan Feng et al..PMID: 25048528, , (2014)

[PMID:25048528](#)

el at., Anticancer effects of sodium butyrate on hepatocellular carcinoma cells in vitro. In Int J Mol Med on 2013 Apr by Hong-Gang Wang, Xiao-Dan

Huang, et al..PMID:

23440283, , (2013)

[PMID:23440283](#)

Note: This product is for in vitro research use only and is not intended for use in humans or animals.