

## Cyclin E1 (Ab-395) Antibody

Catalog No: #21541



Package Size: #21541-1 50ul #21541-2 100ul

Orders: order@signalwayantibody.com

Support: tech@signalwayantibody.com

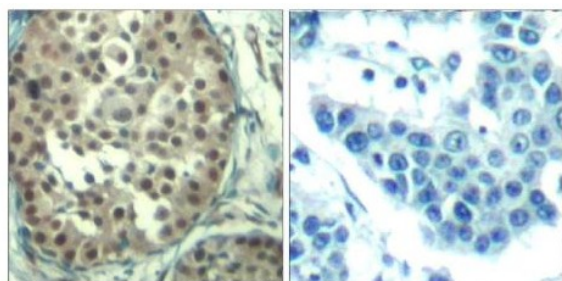
## Description

Product Name	Cyclin E1 (Ab-395) Antibody
Host Species	Rabbit
Clonality	Polyclonal
Purification	The antibody was affinity-purified from rabbit antiserum by affinity-chromatography using epitope-specific immunogen .
Applications	IHC
Species Reactivity	Hu
Specificity	Cyclin E1 (Ab-395) Antibody detects endogenous levels of total Cyclin E1 protein.
Immunogen Type	Peptide-KLH
Immunogen Description	The antiserum was produced against synthesized non-phosphopeptide derived from human Cyclin E1 around the phosphorylation site of threonine 395 (L-L-TP-P-P).
Target Name	Cyclin E1
Other Names	CCNE, CCNE1
Accession No.	P24864
Concentration	1.0mg/ml
Formulation	Rabbit IgG in phosphate buffered saline (without Mg <sup>2+</sup> and Ca <sup>2+</sup> ), pH 7.4, 150mM NaCl, 0.02% sodium azide and 50% glycerol.
Storage	Store at -20°C/1 year

## Application Details

IHC: 1:50~1:100

## Images



Peptide - +  
Immunohistochemical analysis of paraffin-embedded human breast carcinoma tissue using Cyclin E1 (Ab-395) Antibody (#21541).

Immunohistochemical analysis of paraffin-embedded human breast carcinoma tissue using Cyclin E1 (Ab-395) Antibody (#21541).

---

Note: This product is for in vitro research use only and is not intended for use in humans or animals.