

HSV-Tag Mouse Monoclonal Antibody

Catalog No: #T607



Package Size: #T607-1 50ul #T607-2 100ul

Orders: order@signalwayantibody.com

Support: tech@signalwayantibody.com

Description

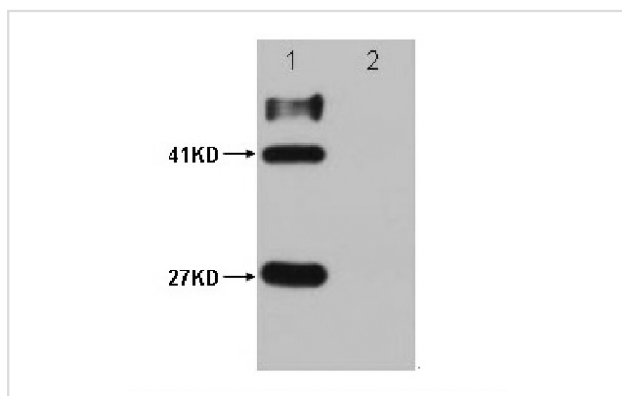
Product Name	HSV-Tag Mouse Monoclonal Antibody
Host Species	Mouse
Clonality	Monoclonal
Isotype	IgG1
Purification	Affinity-chromatography
Applications	WB IF/ICC
Specificity	HSV-tag mouse monoclonal antibody detects endogenous levels of internal, C-terminal, and N-terminal HSV -tagged proteins.
Immunogen Type	Peptide-KLH
Immunogen Description	A synthetic peptide QPELAPEDPED coupled to KLH.
Target Name	HSV-Tag
SDS-PAGE MW	N/A
Concentration	1.0mg/ml
Formulation	Liquid in PBS containing 50% glycerol, 0.5% BSA and 0.02% sodium azide.
Storage	Store at -20 °C. Stable for 12 months from date of receipt

Application Details

WB: 1:3000~1:10000

IF/ICC: 1:200

Images



HSV-Tag Mouse Monoclonal antibody Lane 1: GST- HSV fusion protein (27KD); MBP- HSV 2 fusion protein (41KD)
Lane 2: GST protein; MBP protein

Note: This product is for in vitro research use only and is not intended for use in humans or animals.