

KT3-Tag Mouse Monoclonal Antibody

Catalog No: #T610



Package Size: #T610-1 50ul #T610-2 100ul

Orders: order@signalwayantibody.com

Support: tech@signalwayantibody.com

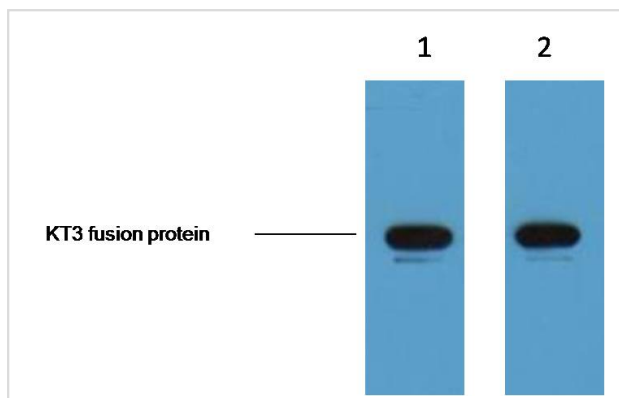
Description

Product Name	KT3-Tag Mouse Monoclonal Antibody
Host Species	Mouse
Clonality	Monoclonal
Isotype	IgG1
Purification	Affinity-chromatography
Applications	WB
Specificity	KT3-Tag antibody can recognize C-terminal, internal, and N-terminal KT3-tagged proteins.
Immunogen Type	Peptide-KLH
Immunogen Description	A synthetic peptide KPPTPPPEPET coupled to KLH.
Target Name	KT3-Tag
SDS-PAGE MW	N/A
Concentration	1.0mg/ml
Formulation	Liquid in PBS containing 50% glycerol, 0.5% BSA and 0.02% sodium azide.
Storage	Store at -20 °C. Stable for 12 months from date of receipt

Application Details

WB: 1:3000~1:10000

Images



1ug KT3 fusion protein+ Primary antibody dilution at
 1γ • 1:5,000 2γ • 1:10,000

Note: This product is for in vitro research use only and is not intended for use in humans or animals.