

EGR1 Antibody

Catalog No: #31068

Package Size: #31068-1 50ul #31068-2 100ul

Orders: order@signalwayantibody.com

Support: tech@signalwayantibody.com

Description

Product Name	EGR1 Antibody
Host Species	Rabbit
Clonality	Polyclonal
Applications	ELISA WB
Species Reactivity	Hu Ms
Specificity	The antibody detects endogenous level of total EGR1 protein.
Immunogen Type	Recombinant protein
Immunogen Description	Fusion protein corresponding to a region derived from 87-337 amino acids of human early growth response 1 early growth response 1
Target Name	EGR1
Other Names	early growth response 1, TIS8, AT225, G0S30, NGFI-A, ZNF225, KROX-24, ZIF-268
Accession No.	Genbank No.: BC073983
Concentration	0.1mg/ml
Formulation	Supplied at 0.8mg/mL in phosphate buffered saline (without Mg ²⁺ and Ca ²⁺), pH 7.3, 0.05% sodium azide and 50% glycerol.
Storage	Store at -20°C/1 year

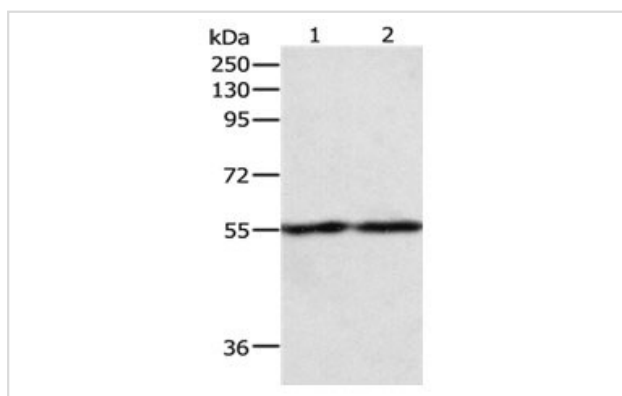
Application Details

Predicted MW: 58kd

ELISA: 1:1000-1:5000

Western blotting: 1:200-1:1000

Images



Gel: 8%SDS-PAGE

Lane1: RAW264.7 cell lysate

Lane2: NIH/3T3 cell lysate

Lysates: 50 ug per lane

Primary antibody: 1/400dilution

Secondary antibody: Goat anti Rabbit IgG - H&L (HRP) at

1/10000 dilution

Exposure time: 2 minutes

Background

EGR-1 (Early growth response protein 1) also known as Zif268 (zinc finger protein 225) or NGFI-A (nerve growth factor-induced protein A) is a protein

that in humans is encoded by the EGR1 gene. The protein encoded by this gene belongs to the EGR family of C2H2-type zinc-finger proteins. It is a nuclear protein and functions as a transcriptional regulator. The products of target genes it activates are required for differentiation and mitogenesis. Studies suggest this is a cancer suppressor gene. Recognizes and binds to the DNA sequence 5'-CGCCCCGC-3'(EGR-site).

Published Papers

et al., PRIMA-1Met/APR-246 displays high antitumor activity in multiple myeloma by induction of p73 and Noxa. In Mol Cancer Ther on 2013 Nov by Hua Jiang, Yijun Yang,

et al..PMID: 24030633, , (2013)

[PMID:24030633](#)

Note: This product is for in vitro research use only and is not intended for use in humans or animals.