

## YWHAB Antibody

Catalog No: #31138

Package Size: #31138-1 50ul #31138-2 100ul

Orders: [order@signalwayantibody.com](mailto:order@signalwayantibody.com)Support: [tech@signalwayantibody.com](mailto:tech@signalwayantibody.com)

## Description

Product Name	YWHAB Antibody
Host Species	Rabbit
Clonality	Polyclonal
Applications	ELISA WB IHC
Species Reactivity	Hu Ms Rt
Specificity	The antibody detects endogenous level of total YWHAB protein.
Immunogen Type	Peptide
Immunogen Description	Synthetic peptide corresponding to a region derived from 4-18 amino acids of Human Tyrosine 3-monooxygenase/tryptophan 5-monooxygenase activation protein, beta polypeptide
Target Name	YWHAB
Other Names	Tyrosine 3-monooxygenase/tryptophan 5-monooxygenase activation protein, beta polypeptide , HS1, GW128, YWHAA, KCIP-1
Accession No.	Genbank No.: NP_003395
Formulation	Supplied at 0.5mg/mL in phosphate buffered saline (without Mg <sup>2+</sup> and Ca <sup>2+</sup> ), pH 7.3, 0.05% sodium azide and 50% glycerol.
Storage	Store at -20°C/1 year

## Application Details

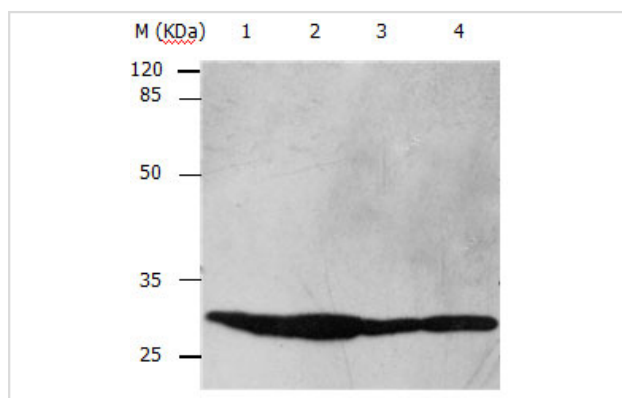
Predicted MW: 28kd

ELISA: 1:2000-1:10000

Western blotting: 1:1000-1:5000

Immunohistochemistry: 1:10-1:100

## Images



Gel: 10%SDS-PAGE

Lane1: HT-29 cell lysate

Lane2: Mouse brain tissue lysate

Lane3: 293T cell lysate

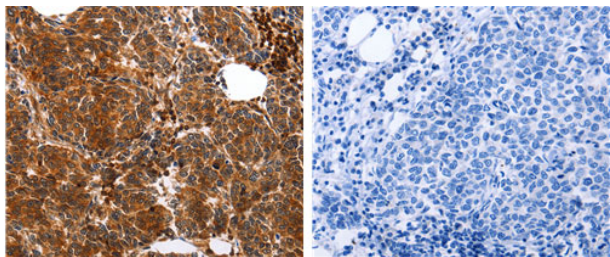
Lane4: Hela cell lysate

Lysates: 40 ug per lane

Primary antibody: 1/250 dilution

Secondary antibody: Donkey anti Rabbit IgG - H&amp;L (HRP) at 1/3000 dilution

Exposure time: 1 second



The image on the left is immunohistochemistry of paraffin-embedded Human breast cancer tissue using 31138 (YWHAB Antibody) at dilution 1/10, on the right is treated with the synthetic peptide

## Background

This gene encodes a protein belonging to the 14-3-3 family of proteins, members of which mediate signal transduction by binding to phosphoserine-containing proteins. This highly conserved protein family is found in both plants and mammals. The encoded protein has been shown to interact with RAF1 and CDC25 phosphatases, suggesting that it may play a role in linking mitogenic signaling and the cell cycle machinery. Two transcript variants, which encode the same protein, have been identified for this gene.

Note: This product is for in vitro research use only and is not intended for use in humans or animals.