

## 5HT1A Antibody

Catalog No: #31139

Package Size: #31139-1 50ul #31139-2 100ul

Orders: order@signalwayantibody.com

Support: tech@signalwayantibody.com

## Description

Product Name	5HT1A Antibody
Host Species	Rabbit
Clonality	Polyclonal
Applications	ELISA WB
Species Reactivity	Hu Ms Rt
Specificity	The antibody detects endogenous level of total 5HT1A protein.
Immunogen Type	Peptide
Immunogen Description	Synthetic peptide corresponding to a region derived from 140-153 amino acids of Human 5-hydroxytryptamine receptor 1A
Target Name	5HT1A
Other Names	5-hydroxytryptamine receptor 1A, 5-HT1A, ADRB2RL1, ADRBRL1
Accession No.	Genbank No.: NP_000515
Concentration	0.8mg/ml
Formulation	Supplied at 2.1mg/mL in phosphate buffered saline (without Mg <sup>2+</sup> and Ca <sup>2+</sup> ), pH 7.3, 0.05% sodium azide and 50% glycerol.
Storage	Store at -20°C/1 year

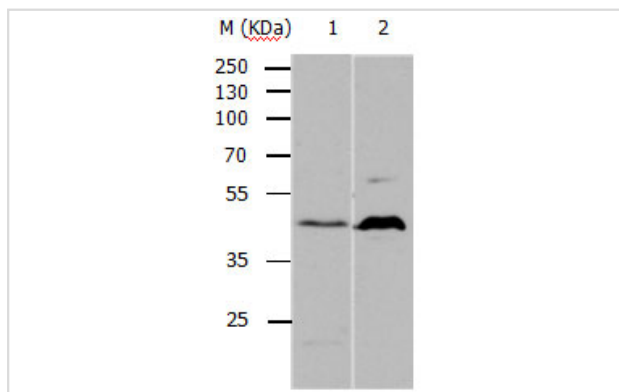
## Application Details

Predicted MW: 46kd

ELISA: 1:2000-1:10000

Western blotting: 1:1000-1:5000

## Images



Gel: 8%SDS-PAGE

Lane1: HepG2 cell lysate

Lane2: Mouse brain tissue lysate

Lysates: 30ug per lane

Primary antibody: 1/1000 dilution

Secondary antibody: Donkey anti Rabbit IgG - H&amp;L (HRP) at

1/3000 dilution

Exposure time: 30 seconds

## Background

This gene encodes a G protein-coupled receptor for 5-hydroxytryptamine (serotonin), and belongs to the 5-hydroxytryptamine receptor subfamily.

Serotonin has been implicated in a number of physiologic processes and pathologic conditions. Inactivation of this gene in mice results in behavior consistent with an increased anxiety and stress response. Mutation in the promoter of this gene has been associated with menstrual cycle-dependent periodic fevers

---

Note: This product is for in vitro research use only and is not intended for use in humans or animals.