

CRMP5 Antibody

Catalog No: #31174



Package Size: #31174-1 50ul #31174-2 100ul

Orders: order@signalwayantibody.com

Support: tech@signalwayantibody.com

Description

Product Name	CRMP5 Antibody
Host Species	Rabbit
Clonality	Polyclonal
Applications	ELISA WB IHC
Species Reactivity	Hu Ms Rt
Specificity	The antibody detects endogenous level of total CRMP5 protein.
Immunogen Type	Peptide-KLH
Immunogen Description	Synthetic peptide corresponding to a region derived from 504-518 amino acids of Human Collapsin response mediator protein 5
Target Name	CRMP5
Other Names	Collapsin response mediator protein 5, DPYSL5, CRAM, Ulip6, CRMP-5
Accession No.	Genbank No.: NP_064519
Concentration	0.7mg/ml
Formulation	Supplied at 0.5mg/mL in phosphate buffered saline (without Mg ²⁺ and Ca ²⁺), pH 7.3, 0.05% sodium azide and 50% glycerol.
Storage	Store at -20°C/1 year

Application Details

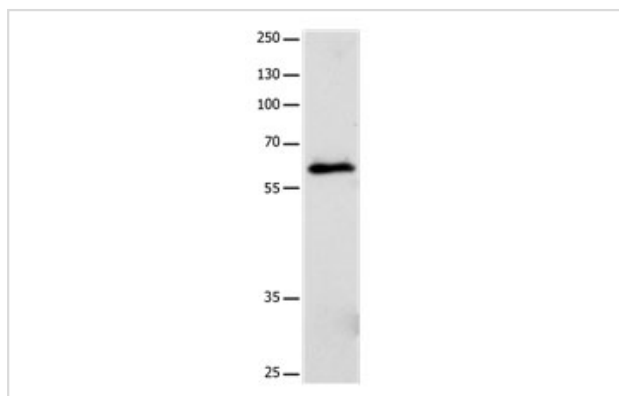
Predicted MW: 62kd

ELISA: 1:500-1:5000

Western blotting: 1:200-1:1000

Immunohistochemistry: 1:10-1:50

Images



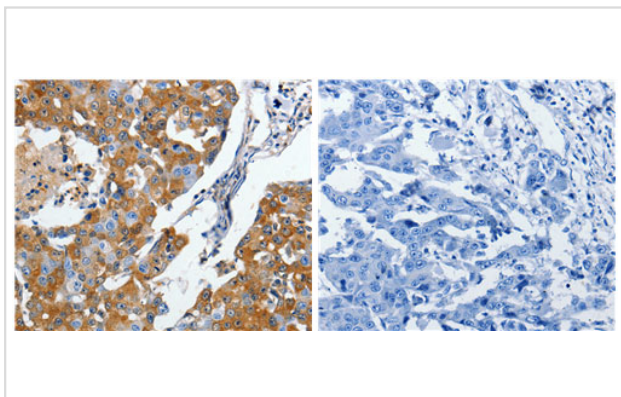
Gel: 8%SDS-PAGE

Lysate: 40 µg Human fetal brain tissue lysate

Primary antibody: 1/250 dilution

Secondary antibody: Donkey anti Rabbit IgG - H&L (HRP) at 1/5000 dilution

Exposure time: 30 seconds



The image on the left is immunohistochemistry of paraffin-embedded Human breast cancer tissue using 31174(CRMP5 Antibody) at dilution 1/10, on the right is treated with the synthetic peptide.

Background

This gene encodes a member of the CRMP (collapsing response mediator protein) family thought to be involved in neural development. Antibodies to the encoded protein were found in some patients with neurologic symptoms who had paraneoplastic syndrome. A pseudogene of this gene is found on chromosome 11. Multiple alternatively spliced variants, encoding the same protein, have been identified.

Note: This product is for in vitro research use only and is not intended for use in humans or animals.