

GJA9 Antibody

Catalog No: #31176

Package Size: #31176-1 50ul #31176-2 100ul

Orders: order@signalwayantibody.com

Support: tech@signalwayantibody.com

Description

Product Name	GJA9 Antibody
Host Species	Rabbit
Clonality	Polyclonal
Applications	ELISA WB
Species Reactivity	Hu
Specificity	The antibody detects endogenous level of total GJA9 protein.
Immunogen Type	Peptide
Immunogen Description	Synthetic peptide corresponding to a region derived from 246-260 amino acids of Human gap junction protein, alpha 9, 59kDa
Target Name	GJA9
Other Names	gap junction protein, alpha 9, 59kDa, CX58, CX59, GJA10
Accession No.	Genbank No.: NP_110399
Concentration	0.4mg/ml
Formulation	Supplied at 0.8mg/mL in phosphate buffered saline (without Mg ²⁺ and Ca ²⁺), pH 7.3, 0.05% sodium azide and 50% glycerol.
Storage	Store at -20°C/1 year

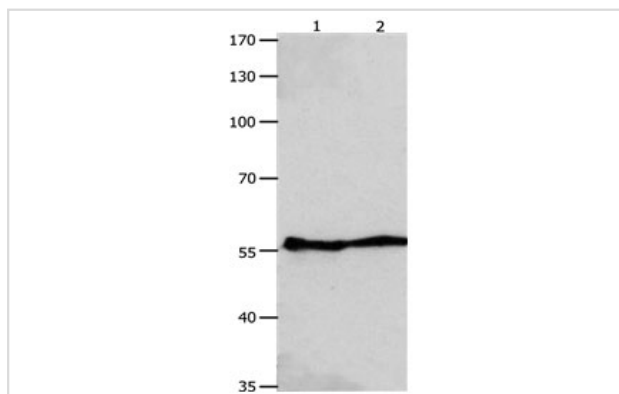
Application Details

Predicted MW: 59kd

ELISA: 1:1000-1:5000

Western blotting: 1:2000-1:5000

Images



Gel: 8%SDS-PAGE

Lane1: Human fetal muscle tissue lysate

Lane2: OP9 cell lysate

Lysates: 40 ug per lane

Primary antibody: 1/400 dilution

Secondary antibody: Goat anti Rabbit IgG - H&L (HRP) at 1/10000 dilution

Exposure time: 1 minute

Background

Connexins, such as GJA9, are involved in the formation of gap junctions, intercellular conduits that directly connect the cytoplasm of contacting cells.

Each gap junction channel is formed by docking of 2 hemichannels, each of which contains 6 connexin subunits. One gap junction consists of a cluster of closely packed pairs of transmembrane channels, the connexons, through which materials of low MW diffuse from one cell to a neighboring cell.

Note: This product is for in vitro research use only and is not intended for use in humans or animals.