

PTGER1 Antibody

Catalog No: #31193

Package Size: #31193-1 50ul #31193-2 100ul

Orders: order@signalwayantibody.com

Support: tech@signalwayantibody.com

Description

Product Name	PTGER1 Antibody
Host Species	Rabbit
Clonality	Polyclonal
Applications	ELISA WB
Species Reactivity	Hu
Specificity	The antibody detects endogenous level of total PTGER1 protein.
Immunogen Type	Peptide
Immunogen Description	Synthetic peptide corresponding to a region derived from 399-402 amino acids of Human prostaglandin E receptor 1 (subtype EP1), 42kDa
Target Name	PTGER1
Other Names	prostaglandin E receptor 1 (subtype EP1), 42kDa, EP1
Accession No.	Genbank No.: NP_000946
Concentration	0.3mg/ml
Formulation	Supplied at 0.9mg/mL in phosphate buffered saline (without Mg ²⁺ and Ca ²⁺), pH 7.3, 0.05% sodium azide and 50% glycerol.
Storage	Store at -20°C/1 year

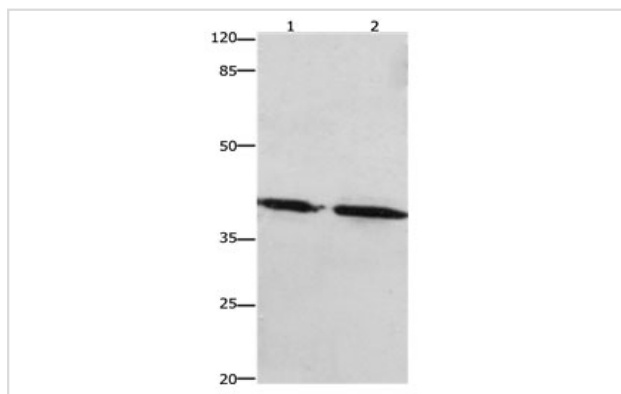
Application Details

Predicted MW: 42kd

ELISA: 1:1000-1:5000

Western blotting: 1:1000-1:5000

Images



Gel: 10%SDS-PAGE

Lane1: Human lymphoma tissue lysate

Lane2: 293T cell lysate

Lysates: 40 ug per lane

Primary antibody: 1/450 dilution

Secondary antibody: Goat anti Rabbit IgG - H&L (HRP) at 1/10000 dilution

Exposure time: 1 minute

Background

The protein encoded by this gene is a member of the G protein-coupled receptor family. This protein is one of four receptors identified for

prostaglandin E2 (PGE2). Through a phosphatidylinositol-calcium second messenger system, G-Q proteins mediate this receptor's activity. Knockout studies in mice suggested a role of this receptor in mediating algesia and in regulation of blood pressure. Studies in mice also suggested that this gene may mediate adrenocorticotrophic hormone response to bacterial endotoxin.

Note: This product is for in vitro research use only and is not intended for use in humans or animals.