

BPIFB1 Antibody

Catalog No: #31229



Package Size: #31229-1 50ul #31229-2 100ul

Orders: order@signalwayantibody.com

Support: tech@signalwayantibody.com

Description

Product Name	BPIFB1 Antibody
Host Species	Rabbit
Clonality	Polyclonal
Applications	ELISA WB
Species Reactivity	Hu
Specificity	The antibody detects endogenous level of total BPIFB1 protein.
Immunogen Type	Peptide
Immunogen Description	Synthetic peptide corresponding to a region derived from 140-153 amino acids of Human BPI fold containing family B, member 1
Target Name	BPIFB1
Other Names	BPI fold containing family B, member 1, LPLUNC1, C20orf114
Concentration	0.5mg/ml
Formulation	Supplied at 1mg/mL in phosphate buffered saline (without Mg ²⁺ and Ca ²⁺), pH 7.3, 0.05% sodium azide and 50% glycerol.
Storage	Store at -20°C/1 year

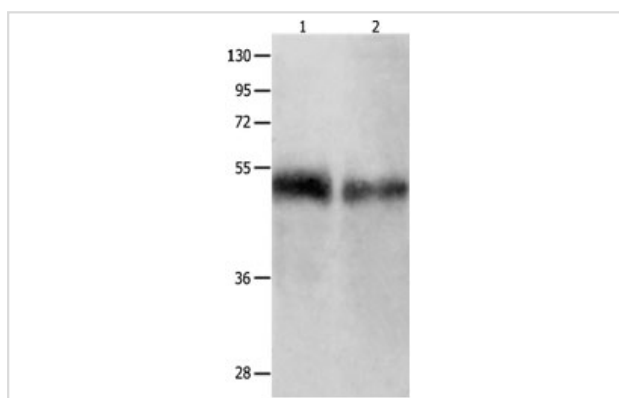
Application Details

Predicted MW: 53kd

ELISA: 1:1000-1:5000

Western blotting: 1:500-1:2000

Images



Gel: 10%SDS-PAGE

Lane1: Human tongue tissue lysate

Lane2: Human laryngocarcinoma tissue lysate

Lysates: 50 ug per lane

Primary antibody: 1/500 dilution

Secondary antibody: Goat anti Rabbit IgG - H&L (HRP) at 1/10000 dilution

Exposure time: 1 minute

Background

The protein encoded by this gene may be involved in the innate immune response to bacterial exposure in the mouth, nasal cavities, and lungs. The encoded protein is secreted and is a member of the BPI/LBP/PLUNC protein superfamily. This gene is found with other members of the superfamily in

a cluster on chromosome 20.

Note: This product is for in vitro research use only and is not intended for use in humans or animals.