

NTSR1 Antibody

Catalog No: #31251



Package Size: #31251-1 50ul #31251-2 100ul

Orders: order@signalwayantibody.com

Support: tech@signalwayantibody.com

Description

Product Name	NTSR1 Antibody
Host Species	Rabbit
Clonality	Polyclonal
Applications	ELISA WB
Species Reactivity	Hu
Specificity	The antibody detects endogenous level of total NTSR1 protein.
Immunogen Type	Peptide
Immunogen Description	Synthetic peptide of human NTSR1
Target Name	NTSR1
Other Names	neurotensin receptor 1 (high affinity), NTR
Accession No.	Genbank No.: NP_002522
Concentration	1.2 mg/ml
Formulation	Supplied at 2.4mg/mL in phosphate buffered saline (without Mg ²⁺ and Ca ²⁺), pH 7.3, 0.05% sodium azide and 50% glycerol.
Storage	Store at -20°C/1 year

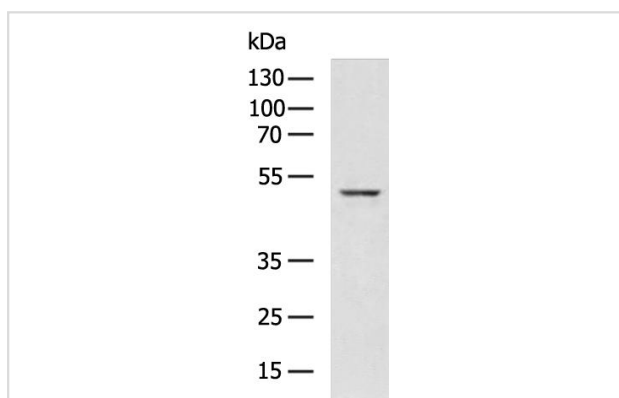
Application Details

Predicted MW: 46kd

ELISA: 1:2000-1:10000

Western blotting: 1:1000-1:5000

Images



Gel: 8%SDS-PAGE
 Lysate: 40 ug
 Lane: HT29 cell lysate
 Primary antibody: at dilution 1/1400
 Secondary antibody: (HRP-conjugated Goat anti rabbit IgG) at 1/5000 dilution
 Exposure time: 20 seconds

Background

Neurotensin receptor 1 belongs to the large superfamily of G-protein coupled receptors. NTSR1 mediates the multiple functions of neurotensin, such as hypotension, hyperglycemia, hypothermia, antinociception, and regulation of intestinal motility and secretion.?

Note: This product is for in vitro research use only and is not intended for use in humans or animals.