

## PGA3/PGA4/PGA5 antibody

Catalog No: #31260



Package Size: #31260-1 50ul #31260-2 100ul

Orders: order@signalwayantibody.com

Support: tech@signalwayantibody.com

## Description

Product Name	PGA3/PGA4/PGA5 antibody
Host Species	Rabbit
Clonality	Polyclonal
Purification	Antigen affinity purification
Applications	ELISA WB IHC
Species Reactivity	Hu
Specificity	The antibody detects endogenous level of PGA3/PGA4/PGA5 protein.
Immunogen Type	Peptide-KLH
Immunogen Description	Synthetic peptide of human PGA3/PGA4/PGA5
Target Name	PGA3/PGA4/PGA5
Other Names	Pepsinogen 3, group I (pepsinogen A), PGA4, PGA5
Calculated MW	42 kDa
Concentration	1.1 mg/ml
Formulation	pH7.4 PBS, 0.05% NaN <sub>3</sub> , 40% Glycerol
Storage	Store at -20°C/1 year

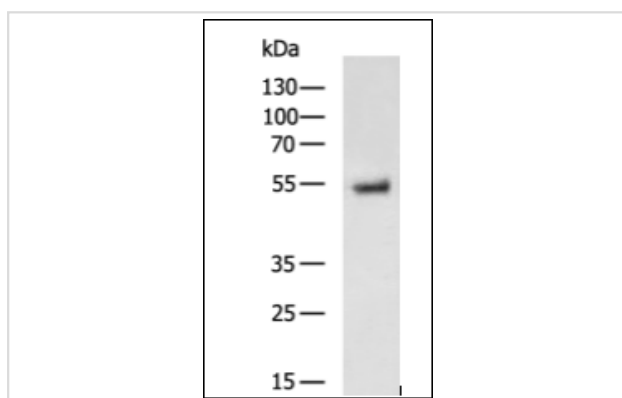
## Application Details

WB 1:1000~1:5000

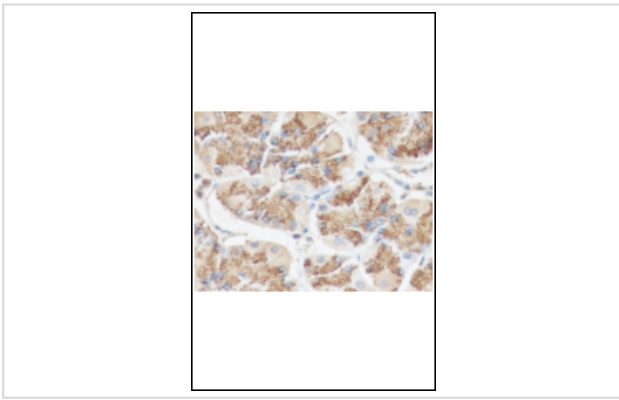
IHC 1:50~1:200

ELISA 1:5000~1:10000

## Images



"Gel: 8%SDS-PAGE  
 Lysate: 40 ug  
 Lane: Mouse stomach tissue lysate  
 Primary antibody: at dilution 1/1000  
 Secondary antibody: at 1/5000 dilution  
 Exposure time: 90 seconds"



The image is immunohistochemistry of paraffin-embedded Human stomach tissue using (PGA3/PGA4/PGA5 Antibody) at dilution 1/50. (Original magnification: 200)

## Background

This gene encodes a protein precursor of the digestive enzyme pepsin, a member of the peptidase A1 family of endopeptidases. The encoded precursor is secreted by gastric chief cells and undergoes autocatalytic cleavage in acidic conditions to form the active enzyme, which functions in the digestion of dietary proteins. This gene is found in a cluster of related genes on chromosome 11, each of which encodes one of multiple pepsinogens. Pepsinogen levels in serum may serve as a biomarker for atrophic gastritis and gastric cancer. [provided by RefSeq, Jul 2015]

Note: This product is for in vitro research use only and is not intended for use in humans or animals.