

## NPY1R Antibody

Catalog No: #31282



Package Size: #31282-1 50ul #31282-2 100ul

Orders: [order@signalwayantibody.com](mailto:order@signalwayantibody.com)Support: [tech@signalwayantibody.com](mailto:tech@signalwayantibody.com)

## Description

Product Name	NPY1R Antibody
Host Species	Rabbit
Clonality	Polyclonal
Applications	ELISA WB IHC
Species Reactivity	Human, Mouse, Rat
Specificity	The antibody detects endogenous level of total NPY1R protein.
Immunogen Type	Peptide-KLH
Immunogen Description	Synthetic peptide corresponding to a region derived from 370-384 amino acids of Human neuropeptide Y receptor Y1
Target Name	NPY1R
Other Names	Neuropeptide Y receptor Y1, NPYR, NPY1-R
Accession No.	Genbank No.: NP_000900
Concentration	0.6mg/ml
Formulation	Supplied at 1.1mg/mL in phosphate buffered saline (without Mg <sup>2+</sup> and Ca <sup>2+</sup> ), pH 7.3, 0.05% sodium azide and 50% glycerol.
Storage	Store at -20°C/1 year

## Application Details

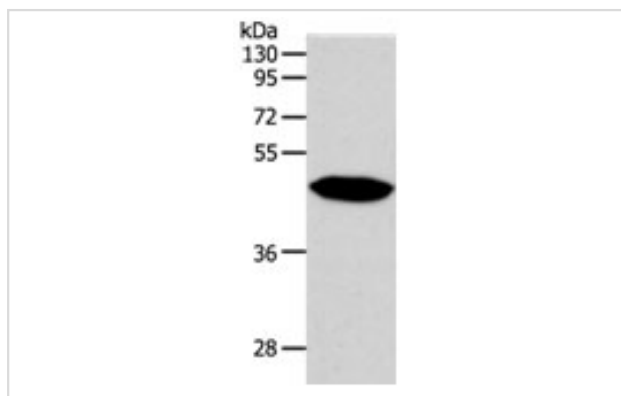
Predicted MW: 44kd

ELISA: 1:1000-1:5000

Western blotting: 1:500-1:2000

Immunohistochemistry: 1:25-1:100

## Images



Gel: 10%SDS-PAGE

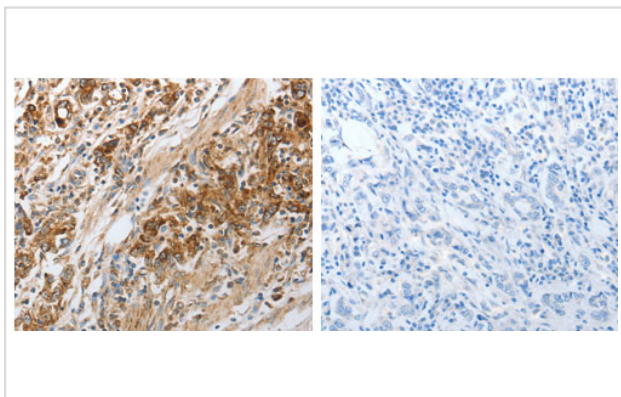
Lysate: 60 µg Human fetal brain tissue lysate

Primary antibody: 1/500 dilution

Secondary antibody: Goat anti Rabbit IgG - H&amp;L (HRP) at

1/10000 dilution

Exposure time: 2 minutes



The image on the left is immunohistochemistry of paraffin-embedded human gastric cancer tissue using 31282 (NPY1R Antibody) at dilution 1/30, on the right is treated with the synthetic peptide.

## Background

Neuropeptide Y (NPY; MIM 162640) is one of the most abundant neuropeptides in the mammalian nervous system and exhibits a diverse range of important physiologic activities, including effects on psychomotor activity, food intake, regulation of central endocrine secretion, and potent vasoactive effects on the cardiovascular system. Two major subtypes of NPY (Y1 and Y2) have been defined by pharmacologic criteria. NPY receptors, such as NPY1R, have been identified in a variety of tissues, including brain, spleen, small intestine, kidney, testis, placenta, and aortic smooth muscle.

Note: This product is for in vitro research use only and is not intended for use in humans or animals.