

PKC delta Antibody

Catalog No: #29253



Package Size: #29253-1 50ul #29253-2 100ul

Orders: order@signalwayantibody.comSupport: tech@signalwayantibody.com

Description

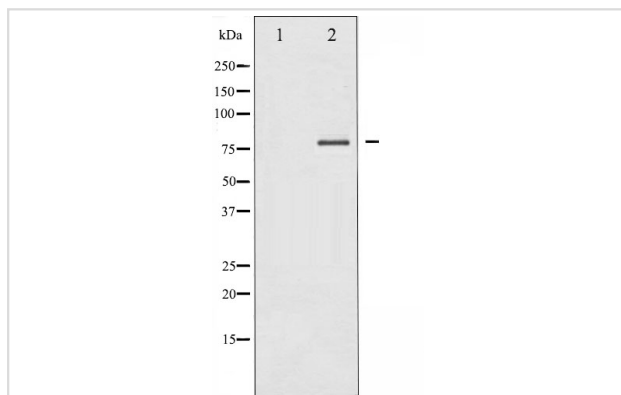
Product Name	PKC delta Antibody
Host Species	Rabbit
Clonality	Polyclonal
Purification	Immunogen affinity purified
Applications	WB IHC
Species Reactivity	Hu
Specificity	PKC delta Antibody detects endogenous levels of total PKC delta
Immunogen Type	Peptide
Immunogen Description	A synthesized peptide derived from human PKC delta
Target Name	PKC delta
Other Names	EC 2.7.11.13, KPCD, PKC-delta, PRKCD, kinase PKC-delta, nPKC-delta
Accession No.	Swiss-Prot#: Q05655
SDS-PAGE MW	78KD
Concentration	1.0mg/ml
Formulation	Rabbit IgG in phosphate buffered saline , pH 7.4, 150mM NaCl, 0.02% sodium azide and 50% glycerol.
Storage	Store at -20°C/1 year

Application Details

WB 1:500-1:2000

IHC 1:50-1:200

Images



Western blot analysis of PKC delta expression in MCF7 whole cell lysates, The lane on the left is treated with the antigen-specific peptide.

Background

Protein kinase C (PKC) is a family of serine- and threonine-specific protein kinases that can be activated by calcium and the second messenger diacylglycerol. PKC family members phosphorylate a wide variety of protein targets and are known to be involved in diverse cellular signaling

pathways.

Note: This product is for in vitro research use only and is not intended for use in humans or animals.