

AML1 (Phospho-Ser303) Antibody

Catalog No: #12003



Package Size: #12003-1 50ul #12003-2 100ul

Orders: order@signalwayantibody.com

Support: tech@signalwayantibody.com

Description

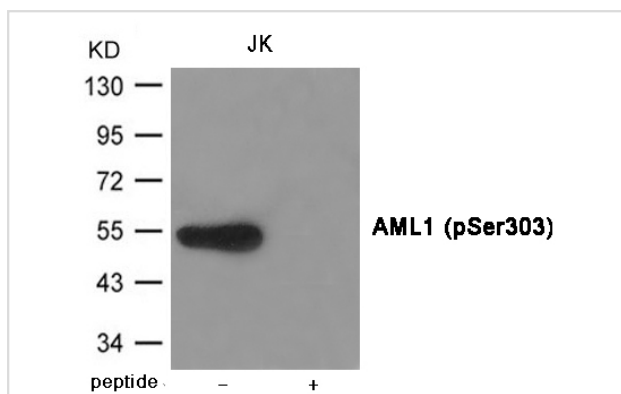
| | |
|-----------------------|--|
| Product Name | AML1 (Phospho-Ser303) Antibody |
| Host Species | Rabbit |
| Clonality | Polyclonal |
| Purification | Antibodies were produced by immunizing rabbits with synthetic phosphopeptide and KLH conjugates. Antibodies were purified by affinity-chromatography using epitope-specific phosphopeptide. Non-phospho specific antibodies were removed by chromatography using non-phosphopeptide. |
| Applications | WB |
| Species Reactivity | Hu Ms Rt |
| Specificity | The antibody detects endogenous level of AML1 only when phosphorylated at Serine 303. |
| Immunogen Type | Peptide-KLH |
| Immunogen Description | Peptide sequence around phosphorylation site of serine 303 (T-A-F(p)-S-D) derived from Human AML1. |
| Target Name | AML1 |
| Modification | Phospho |
| Other Names | CBFA2, EVI-1, AMLCR1, PEBP2aB, AML1-EVI-1 |
| Accession No. | Swiss-Prot#: Q01196; NCBI Gene#: 861; NCBI Protein#: NP_001001890.1 |
| SDS-PAGE MW | 50kd |
| Concentration | 1.0mg/ml |
| Formulation | Supplied at 1.0mg/mL in phosphate buffered saline (without Mg ²⁺ and Ca ²⁺), pH 7.4, 150mM NaCl, 0.02% sodium azide and 50% glycerol. |
| Storage | Store at -20°C/1 year |

Application Details

Predicted MW: 50kd

Western blotting: 1:500~1:1000

Images



Western blot analysis of extracts from JK cells using AML1 (Phospho-Ser303) Antibody #12003. The lane on the right is treated with the antigen-specific peptide.

Background

CBF binds to the core site, 5'-PYGPYGGT-3', of a number of enhancers and promoters, including murine leukemia virus, polyomavirus enhancer, T-cell receptor enhancers, LCK, IL-3 and GM-CSF promoters. The alpha subunit binds DNA and appears to have a role in the development of normal hematopoiesis. Isoform AML-1L interferes with the transactivation activity of RUNX1. Acts synergistically with ELF4 to transactivate the IL-3 promoter and with ELF2 to transactivate the mouse BLK promoter. Inhibits KAT6B-dependent transcriptional activation.

Note: This product is for in vitro research use only and is not intended for use in humans or animals.