

# Dynamin-1 (Phospho-Ser774) Antibody

Catalog No: #12005



Package Size: #12005-1 50ul #12005-2 100ul

Orders: [order@signalwayantibody.com](mailto:order@signalwayantibody.com)Support: [tech@signalwayantibody.com](mailto:tech@signalwayantibody.com)

## Description

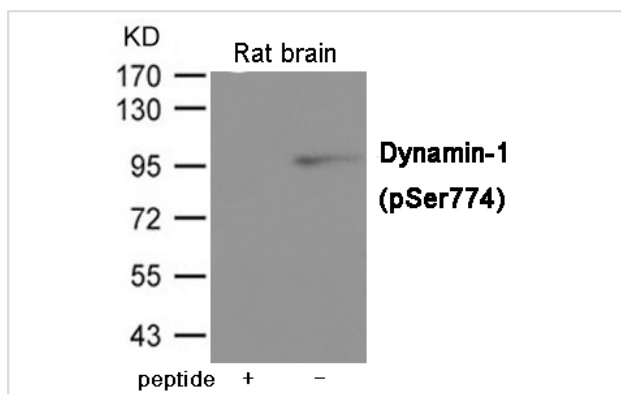
Product Name	Dynamin-1 (Phospho-Ser774) Antibody
Host Species	Rabbit
Clonality	Polyclonal
Purification	Antibodies were produced by immunizing rabbits with synthetic phosphopeptide and KLH conjugates. Antibodies were purified by affinity-chromatography using epitope-specific phosphopeptide. Non-phospho specific antibodies were removed by chromatography using non-phosphopeptide.
Applications	WB
Species Reactivity	Hu Ms Rt
Specificity	The antibody detects endogenous level of Dynamin-1 only when phosphorylated at Serine 774.
Immunogen Type	Peptide-KLH
Immunogen Description	Peptide sequence around phosphorylation site of serine 774 (R-R-S(p)-P-T) derived from Dynamin-1.
Target Name	Dynamin-1
Modification	Phospho
Other Names	DNM
Accession No.	Swiss-Prot#: Q05193; NCBI Gene#: 1759; NCBI Protein#: NP_001005336.1
SDS-PAGE MW	97kd
Concentration	1.0mg/ml
Formulation	Supplied at 1.0mg/mL in phosphate buffered saline (without Mg <sup>2+</sup> and Ca <sup>2+</sup> ), pH 7.4, 150mM NaCl, 0.02% sodium azide and 50% glycerol.
Storage	Store at -20°C/1 year

## Application Details

Predicted MW: 97kd

Western blotting: 1:500~1:1000

## Images



Western blot analysis of extracts from Rat brain tissue using Dynamin-1 (Phospho-Ser774) Antibody #12005. The lane on the left is treated with the antigen-specific peptide.

## Background

---

Microtubule-associated force-producing protein involved in producing microtubule bundles and able to bind and hydrolyze GTP. Most probably involved in vesicular trafficking processes. Involved in receptor-mediated endocytosis.

---

Note: This product is for in vitro research use only and is not intended for use in humans or animals.