

## GRF-1 (Phospho-Tyr1105) Antibody

Catalog No: #12009



Package Size: #12009-1 50ul #12009-2 100ul

Orders: order@signalwayantibody.com

Support: tech@signalwayantibody.com

## Description

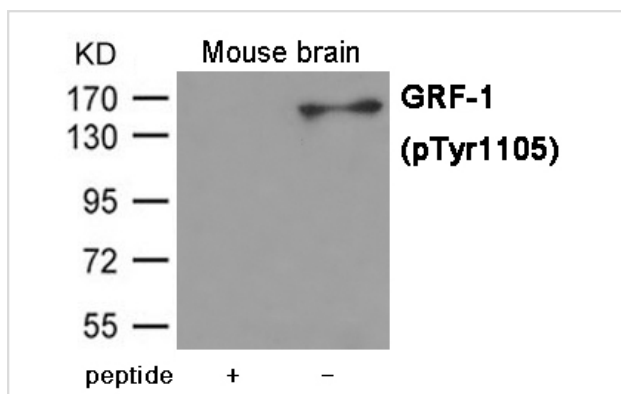
Product Name	GRF-1 (Phospho-Tyr1105) Antibody
Host Species	Rabbit
Clonality	Polyclonal
Purification	Antibodies were produced by immunizing rabbits with synthetic phosphopeptide and KLH conjugates. Antibodies were purified by affinity-chromatography using epitope-specific phosphopeptide. Non-phospho specific antibodies were removed by chromatography using non-phosphopeptide.
Applications	WB
Species Reactivity	Hu Ms Rt
Specificity	The antibody detects endogenous level of GRF-1 only when phosphorylated at Tyrosine 1150.
Immunogen Type	Peptide-KLH
Immunogen Description	Peptide sequence around phosphorylation site of Tyrosine 1105 (N-I-Y(p)-S-V) derived from Human GRF-1.
Target Name	GRF-1
Modification	Phospho
Other Names	GRLF1, P190A, P190-A, p190RhoGAP, p190ARhoGAP
Accession No.	Swiss-Prot#: Q9NRY4; NCBI Gene#: 2909; NCBI Protein#: NP_004482.4
SDS-PAGE MW	155kd
Concentration	1.0mg/ml
Formulation	Supplied at 1.0mg/mL in phosphate buffered saline (without Mg <sup>2+</sup> and Ca <sup>2+</sup> ), pH 7.4, 150mM NaCl, 0.02% sodium azide and 50% glycerol.
Storage	Store at -20°C/1 year

## Application Details

Predicted MW: 155kd

Western blotting: 1:500~1:1000

## Images



Western blot analysis of extracts from Mouse brain tissue using GRF-1 (Phospho-Tyr1105) Antibody #12009. The lane on the left is treated with the antigen-specific peptide.

## Background

---

Represses transcription of the glucocorticoid receptor by binding to the cis-acting regulatory sequence 5'-GAGAAAAGAACTGGAGAACTC-3'. May participate in the regulation of retinal development and degeneration. May transduce signals from p21-ras to the nucleus, acting via the ras GTPase-activating protein (GAP). May also act as a tumor suppressor.

---

Note: This product is for in vitro research use only and is not intended for use in humans or animals.