

HSL (Phospho-Ser552) Antibody

Catalog No: #12010

Package Size: #12010-1 50ul #12010-2 100ul

Orders: order@signalwayantibody.com

Support: tech@signalwayantibody.com

Description

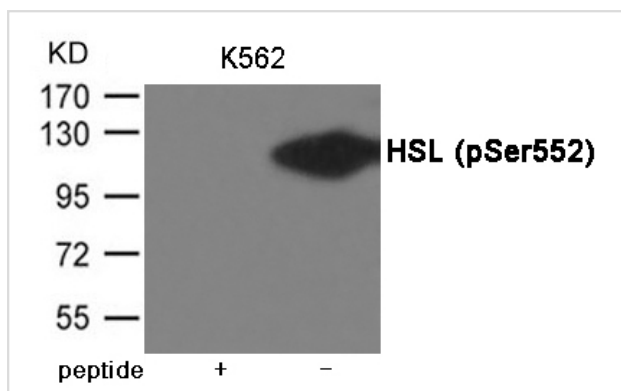
Product Name	HSL (Phospho-Ser552) Antibody
Host Species	Rabbit
Clonality	Polyclonal
Purification	Antibodies were produced by immunizing rabbits with synthetic phosphopeptide and KLH conjugates. Antibodies were purified by affinity-chromatography using epitope-specific phosphopeptide. Non-phospho specific antibodies were removed by chromatography using non-phosphopeptide.
Applications	WB
Species Reactivity	Hu Ms Rt
Specificity	The antibody detects endogenous level of HSL only when phosphorylated at Serine 552.
Immunogen Type	Peptide-KLH
Immunogen Description	Peptide sequence around phosphorylation site of serine 552 (V-L-S(p)-S-L) derived from Human HSL.
Target Name	HSL
Modification	Phospho
Other Names	HSL, LHS
Accession No.	Swiss-Prot#: Q05469; NCBI Gene#: 3991; NCBI Protein#: NP_005348.2
SDS-PAGE MW	117kd
Concentration	1.0mg/ml
Formulation	Supplied at 1.0mg/mL in phosphate buffered saline (without Mg ²⁺ and Ca ²⁺), pH 7.4, 150mM NaCl, 0.02% sodium azide and 50% glycerol.
Storage	Store at -20°C/1 year

Application Details

Predicted MW: 117kd

Western blotting: 1:500~1:1000

Images



Western blot analysis of extracts from K562 cells using HSL (Phospho-Ser552) Antibody #12010. The lane on the left is treated with the antigen-specific peptide.

Background

In adipose tissue and heart, it primarily hydrolyzes stored triglycerides to free fatty acids, while in steroidogenic tissues, it principally converts cholesteryl esters to free cholesterol for steroid hormone production.

Note: This product is for in vitro research use only and is not intended for use in humans or animals.