

## FGFR1 (Phospho-Tyr654) Antibody

Catalog No: #12014



Package Size: #12014-1 50ul #12014-2 100ul

Orders: order@signalwayantibody.com

Support: tech@signalwayantibody.com

## Description

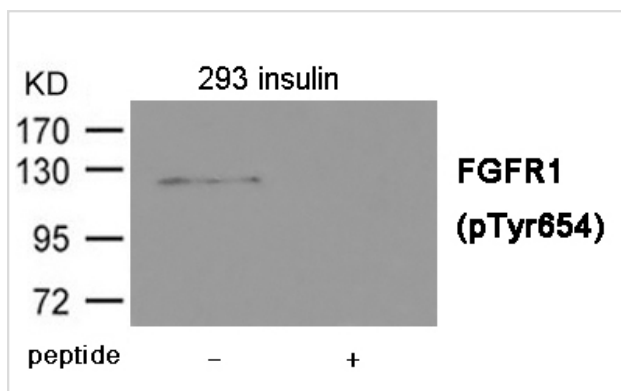
Product Name	FGFR1 (Phospho-Tyr654) Antibody
Host Species	Rabbit
Clonality	Polyclonal
Purification	Antibodies were produced by immunizing rabbits with synthetic phosphopeptide and KLH conjugates. Antibodies were purified by affinity-chromatography using epitope-specific phosphopeptide. Non-phospho specific antibodies were removed by chromatography using non-phosphopeptide.
Applications	WB
Species Reactivity	Hu Ms Rt
Specificity	The antibody detects endogenous level of FGFR1 only when phosphorylated at Tyrosine 654.
Immunogen Type	Peptide-KLH
Immunogen Description	Peptide sequence around phosphorylation site of Tyrosine 654 (D-Y-Y(p)-K-K) derived from Human FGFR1.
Target Name	FGFR1
Modification	Phospho
Other Names	CEK, FLG, HH2, OGD, FLT2
Accession No.	Swiss-Prot#: P11362; NCBI Gene#: 2260; NCBI Protein#: NP_001167534.1
SDS-PAGE MW	120kd
Concentration	1.0mg/ml
Formulation	Supplied at 1.0mg/mL in phosphate buffered saline (without Mg <sup>2+</sup> and Ca <sup>2+</sup> ), pH 7.4, 150mM NaCl, 0.02% sodium azide and 50% glycerol.
Storage	Store at -20°C/1 year

## Application Details

Predicted MW: 120kd

Western blotting: 1:500~1:1000

## Images



Western blot analysis of extracts from 293 cells treated with insulin using FGFR1 (Phospho-Tyr654) Antibody #12014. The lane on the right is treated with the antigen-specific peptide.

## Background

---

Tyrosine-protein kinase that acts as cell-surface receptor for fibroblast growth factors and plays an essential role in the regulation of embryonic development, cell proliferation, differentiation and migration. Required for normal mesoderm patterning and correct axial organization during embryonic development, normal skeletogenesis and normal development of the gonadotropin-releasing hormone (GnRH) neuronal system. Phosphorylates PLCG1, FRS2, GAB1 and SHB. Ligand binding leads to the activation of several signaling cascades. Activation of PLCG1 leads to the production of the cellular signaling molecules diacylglycerol and inositol 1,4,5-trisphosphate. Phosphorylation of FRS2 triggers recruitment of GRB2, GAB1, PIK3R1 and SOS1, and mediates activation of RAS, MAPK1/ERK2, MAPK3/ERK1 and the MAP kinase signaling pathway, as well as of the AKT1 signaling pathway. Promotes phosphorylation of SHC1, STAT1 and PTPN11/SHP2. In the nucleus, enhances RPS6KA1 and CREB1 activity and contributes to the regulation of transcription. FGFR1 signaling is down-regulated by IL17RD/SEF, and by FGFR1 ubiquitination, internalization and degradation.

---

Note: This product is for in vitro research use only and is not intended for use in humans or animals.