

## NFAT4 (Phospho-Ser165) Antibody

Catalog No: #12019



Package Size: #12019-1 50ul #12019-2 100ul

Orders: order@signalwayantibody.com

Support: tech@signalwayantibody.com

## Description

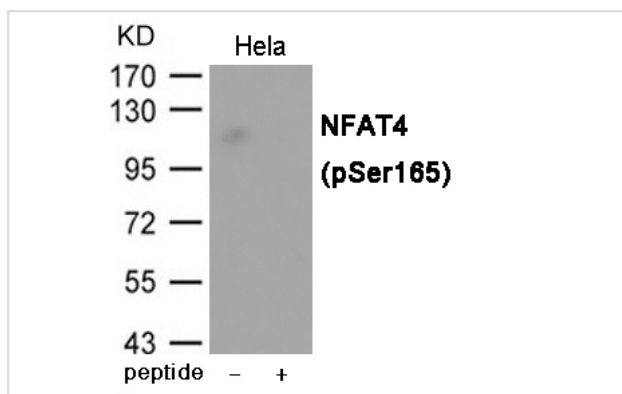
Product Name	NFAT4 (Phospho-Ser165) Antibody
Host Species	Rabbit
Clonality	Polyclonal
Purification	Antibodies were produced by immunizing rabbits with synthetic phosphopeptide and KLH conjugates. Antibodies were purified by affinity-chromatography using epitope-specific phosphopeptide. Non-phospho specific antibodies were removed by chromatography using non-phosphopeptide.
Applications	WB
Species Reactivity	Hu Ms
Specificity	The antibody detects endogenous level of NFAT4 only when phosphorylated at Serine 165.
Immunogen Type	Peptide-KLH
Immunogen Description	Peptide sequence around phosphorylation site of Serine 165 (S-P-S(p)-P-A) derived from Human NFAT4.
Target Name	NFAT4
Modification	Phospho
Other Names	NFAT4, NFATX,
Accession No.	Swiss-Prot#: Q12968; NCBI Gene#: 4775; NCBI Protein#: NP_004546.1
SDS-PAGE MW	115kd
Concentration	1.0mg/ml
Formulation	Supplied at 1.0mg/mL in phosphate buffered saline (without Mg <sup>2+</sup> and Ca <sup>2+</sup> ), pH 7.4, 150mM NaCl, 0.02% sodium azide and 50% glycerol.
Storage	Store at -20°C/1 year

## Application Details

Predicted MW: 115kd

Western blotting: 1:500~1:1000

## Images



Western blot analysis of extracts from HeLa cells using NFAT4 (Phospho-Ser165) Antibody #12019. The lane on the right is treated with the antigen-specific peptide.

## Background

---

Acts as a regulator of transcriptional activation. Plays a role in the inducible expression of cytokine genes in T-cells, especially in the induction of the IL-2.

---

Note: This product is for in vitro research use only and is not intended for use in humans or animals.