

TNNI3 (Phospho-Thr142) Antibody

Catalog No: #12028



Package Size: #12028-1 50ul #12028-2 100ul

Orders: order@signalwayantibody.com

Support: tech@signalwayantibody.com

Description

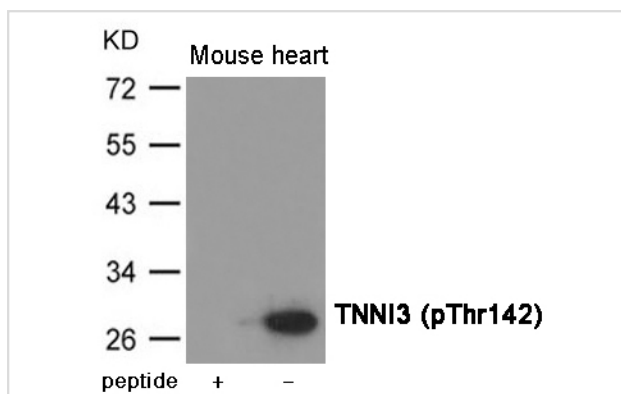
Product Name	TNNI3 (Phospho-Thr142) Antibody
Host Species	Rabbit
Clonality	Polyclonal
Purification	Antibodies were produced by immunizing rabbits with synthetic phosphopeptide and KLH conjugates. Antibodies were purified by affinity-chromatography using epitope-specific phosphopeptide. Non-phospho specific antibodies were removed by chromatography using non-phosphopeptide.
Applications	WB
Species Reactivity	Hu Ms Rt
Specificity	The antibody detects endogenous level of TNNI3 only when phosphorylated at Threonine 142.
Immunogen Type	Peptide-KLH
Immunogen Description	Peptide sequence around phosphorylation site of Threonine 142 (R-P-T(p)-L-R) derived from Human TNNI3.
Target Name	TNNI3
Modification	Phospho
Other Names	CMH7, RCM1, cTnI, CMD2A, TNNC1
Accession No.	Swiss-Prot#: P19429; NCBI Gene#: 7137; NCBI Protein#: NP_000354.4
SDS-PAGE MW	28kd
Concentration	1.0mg/ml
Formulation	Supplied at 1.0mg/mL in phosphate buffered saline (without Mg ²⁺ and Ca ²⁺), pH 7.4, 150mM NaCl, 0.02% sodium azide and 50% glycerol.
Storage	Store at -20°C/1 year

Application Details

Predicted MW: 28kd

Western blotting: 1:500~1:1000

Images



Western blot analysis of extracts from Mouse heart tissue using TNNI3 (Phospho-Thr142) Antibody #12028. The lane on the left is treated with the antigen-specific peptide.

Background

Troponin I is the inhibitory subunit of troponin, the thin filament regulatory complex which confers calcium-sensitivity to striated muscle actomyosin ATPase activity.

Note: This product is for in vitro research use only and is not intended for use in humans or animals.