

## Syntaxin 1A (Phospho-Ser14) Antibody

Catalog No: #12059



Package Size: #12059-1 50ul #12059-2 100ul

Orders: order@signalwayantibody.com

Support: tech@signalwayantibody.com

## Description

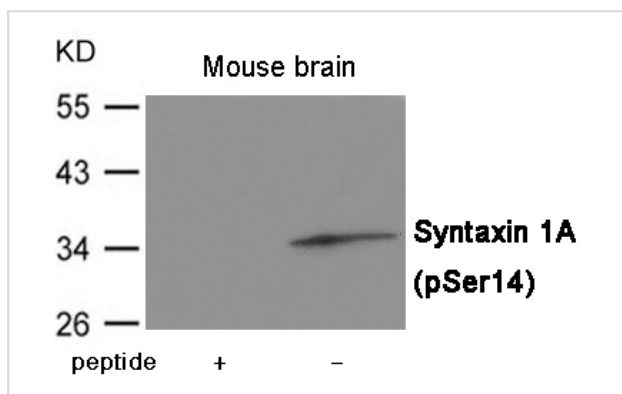
Product Name	Syntaxin 1A (Phospho-Ser14) Antibody
Host Species	Rabbit
Clonality	Polyclonal
Purification	Antibodies were produced by immunizing rabbits with synthetic phosphopeptide and KLH conjugates. Antibodies were purified by affinity-chromatography using epitope-specific phosphopeptide. Non-phospho specific antibodies were removed by chromatography using non-phosphopeptide.
Applications	WB
Species Reactivity	Hu Ms Rt
Specificity	The antibody detects endogenous level of Syntaxin 1A only when phosphorylated at Serine 14.
Immunogen Type	Peptide-KLH
Immunogen Description	Peptide sequence around phosphorylation site of Serine 14 (K-D-S(p)-D-D) derived from Human Syntaxin 1A.
Target Name	Syntaxin 1A
Modification	Phospho
Other Names	STX1, HPC-1, P35-1, SYN1A
Accession No.	Swiss-Prot#: Q16623; NCBI Gene#: 6804; NCBI Protein#: NP_001159375.1
SDS-PAGE MW	35kd
Concentration	1.0mg/ml
Formulation	Supplied at 1.0mg/mL in phosphate buffered saline (without Mg <sup>2+</sup> and Ca <sup>2+</sup> ), pH 7.4, 150mM NaCl, 0.02% sodium azide and 50% glycerol.
Storage	Store at -20°C/1 year

## Application Details

Predicted MW: 35kd

Western blotting: 1:500~1:1000

## Images



Western blot analysis of extracts from Mouse brain tissue using Syntaxin 1A (Phospho-Ser14) Antibody #12059. The lane on the left is treated with the antigen-specific peptide.

## Background

---

Potentially involved in docking of synaptic vesicles at presynaptic active zones. May play a critical role in neurotransmitter exocytosis. May mediate Ca<sup>2+</sup>-regulation of exocytosis acrosomal reaction in sperm.

---

Note: This product is for in vitro research use only and is not intended for use in humans or animals.