

## CSK Monoclonal Antibody

Catalog No: #27181



Package Size: #27181-1 50ul #27181-2 100ul

Orders: [order@signalwayantibody.com](mailto:order@signalwayantibody.com)Support: [tech@signalwayantibody.com](mailto:tech@signalwayantibody.com)

## Description

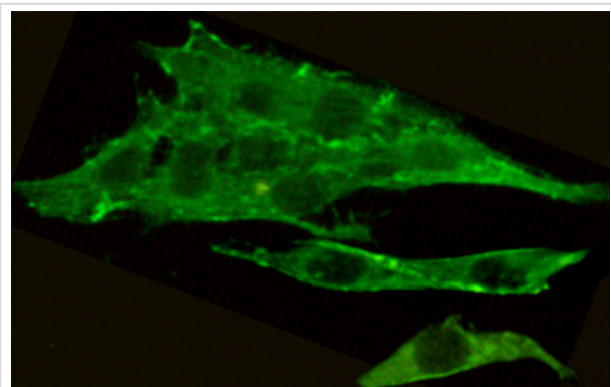
Product Name	CSK Monoclonal Antibody
Host Species	Mouse
Clonality	Monoclonal
Clone No.	2B4-C6-A10
Isotype	IgG2b
Purification	Affinity purified
Applications	WB ICC
Species Reactivity	Hu Rt
Specificity	This antibody detects endogenous levels of CSK and does not cross-react with related proteins.
Immunogen Type	Recombinant Protein
Immunogen Description	Purified recombinant human CSK protein fragments expressed in E.coli.
Target Name	CSK
Other Names	C SRC; C SRC kinase; C src Tyrosine Kinase; C-SRC kinase; c-src tyrosine kinase; Csk A; CSK; CSK_HUMAN; CYTOPLASMIC TYROSINE KINASE; EC2.7.10.2; MGC112926; MGC117393; MGC154049; P60 Src; Protein tyrosine kinase CYL; Protein-tyrosine kinase CYL;
Accession No.	Uniprot: P41240 Gene ID: 1445
SDS-PAGE MW	50kd
Formulation	Purified mouse monoclonal in buffer containing 0.1M Tris-Glycine(pH 7.4, 150 mM NaCl)with 0.2% sodium azide, 0.1mg/mlBSA and 50% glycerol.
Storage	store at -20 $\Lambda$ C

## Application Details

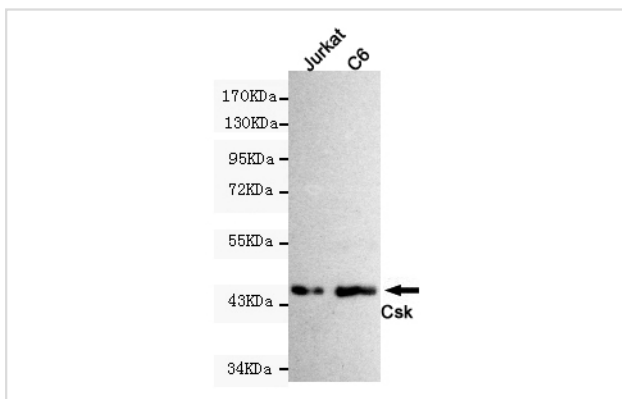
Western blotting: 1:1000

Immunocytochemistry: 1:50

## Images



Immunocytochemistry staining of C6 cells fixed by anhydrous methanol for 2 h at -20°C and using anti-CSK antibody (dilution 1:50).



Western blot detection of CSK antibody in C6 and Jurkat cell lysates using CSK antibody (1:1000 diluted). Predicted band size: 50KDa. Observed band size: 50KDa.

## Background

Non-receptor tyrosine-protein kinase that plays an important role in the regulation of cell growth, differentiation, migration and immune response. Phosphorylates tyrosine residues located in the C-terminal tails of Src-family kinases (SFKs) including LCK, SRC, HCK, FYN, LYN or YES1. Upon tail phosphorylation, Src-family members engage in intramolecular interactions between the phosphotyrosine tail and the SH2 domain that result in an inactive conformation. To inhibit SFKs, CSK is recruited to the plasma membrane via binding to transmembrane proteins or adapter proteins located near the plasma membrane. Suppresses signaling by various surface receptors, including T-cell receptor (TCR) and B-cell receptor (BCR) by phosphorylating and maintaining inactive several positive effectors such as FYN or LCK.

Note: This product is for in vitro research use only and is not intended for use in humans or animals.