

Prominin-1 Monoclonal Antibody

Catalog No: #27208

Package Size: #27208-1 50ul #27208-2 100ul

Orders: order@signalwayantibody.com

Support: tech@signalwayantibody.com

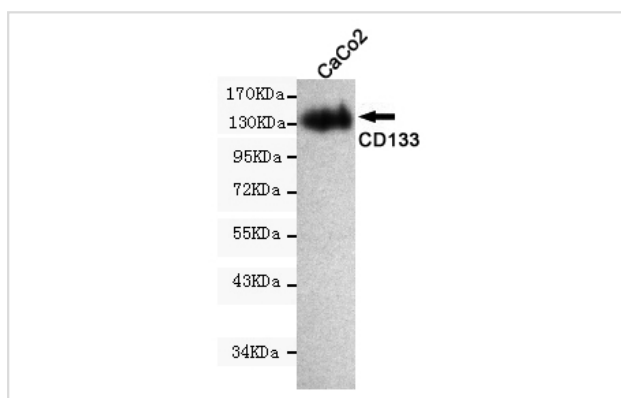
Description

Product Name	Prominin-1 Monoclonal Antibody
Host Species	Mouse
Clonality	Monoclonal
Clone No.	6H10-F1-C11
Isotype	IgG2a
Purification	Affinity purified
Applications	WB
Species Reactivity	Hu
Specificity	This antibody detects endogenous levels of PROM1 and does not cross-react with related proteins.
Immunogen Type	Recombinant Protein
Immunogen Description	Purified recombinant human PROM1 protein fragments expressed in E.coli.
Target Name	Prominin-1
Accession No.	Uniprot: O43490 Gene ID: 8842
SDS-PAGE MW	133kd
Formulation	Purified mouse monoclonal in PBS(pH 7.4) containing with 0.02% sodium azide,0.1mg/mlBSA and 50% glycerol.
Storage	store at -20Λ C

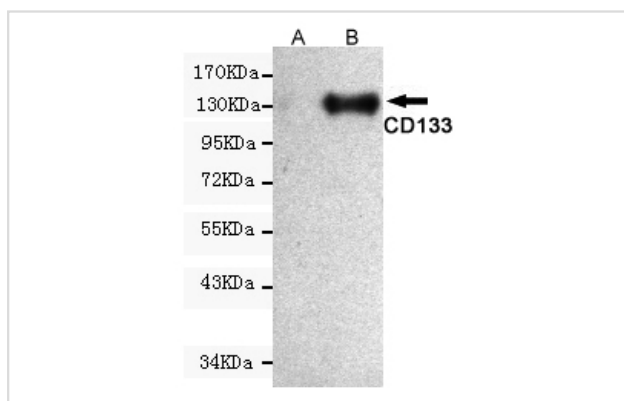
Application Details

Western blotting: 1:1000

Images



Western blot detection of PROM1 antibody in CaCo2 cell lysate using PROM1 antibody (1:1000 diluted). Predicted band size:97KDa.Observed band size:133KDa



Western blot detection of PROM1 expression in CHO-k1 cells non-transfected (A) or transfected (B) with PROM1 and using PROM1 antibody (1:1000 diluted). Predicted band size: 97KDa. Observed band size: 133KDa.

Background

Binds cholesterol in cholesterol-containing plasma membrane microdomains. Proposed to play a role in apical plasma membrane organization of epithelial cells. During early retinal development acts as a key regulator of disk morphogenesis. Involved in regulation of MAPK and Akt signaling pathways. In neuroblastoma cells suppresses cell differentiation such as neurite outgrowth in a RET-dependent manner.

Note: This product is for in vitro research use only and is not intended for use in humans or animals.