

## RPA32/RPA2 Monoclonal Antibody

Catalog No: #27216



Package Size: #27216-1 50ul #27216-2 100ul

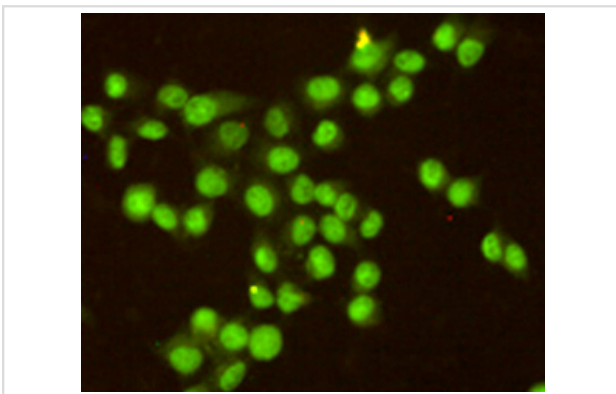
Orders: order@signalwayantibody.com

Support: tech@signalwayantibody.com

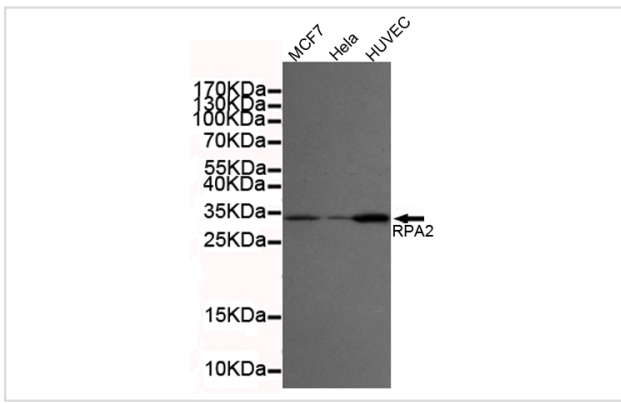
## Description

Product Name	RPA32/RPA2 Monoclonal Antibody
Host Species	Mouse
Clonality	Monoclonal
Clone No.	3E7-B5-F2
Isotype	IgG2b
Purification	Affinity purified
Applications	WB IP ICC
Species Reactivity	Hu
Specificity	This antibody detects endogenous levels of RPA32/RPA2 and does not cross-react with related proteins.
Immunogen Type	Recombinant Protein
Immunogen Description	Purified recombinant human RPA32/RPA2 protein fragments expressed in E.coli.
Target Name	RPA32/RPA2
Other Names	60S acidic ribosomal protein P1; AA409079; A1325195; AU020965; HSSB; ik:tdsubc_2g1; M(2)21C; MGC137236; OTTHUMP0000004008; p32; p34; RCJMB04_6d17 replication protein A2, 32kDa; REPA 2; REPA1; REPA2; Replication factor A protein 2;
Accession No.	Uniprot: P15927 Gene ID: 6118
SDS-PAGE MW	32kd
Formulation	Purified mouse monoclonal antibody in PBS(pH 7.4) containing with 0.02% sodium azide and 50% glycerol.
Storage	store at -20 $\wedge$ C

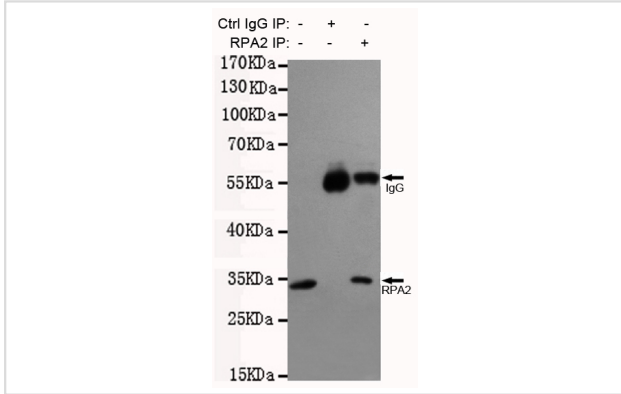
## Images



Immunocytochemistry staining of HeLa cells fixed with -20°C Methanol and using anti-RPA32/RPA2 antibody (dilution 1:200).



Western blot detection of RPA32/RPA2 in MCF7, HeLa and HUVEC cell lysates using RPA32/RPA2 antibody (1:2000 diluted). Predicted band size: 32KDa. Observed band size: 32KDa. Exposure time: 20s.



Immunoprecipitation analysis of HeLa cell lysates using RPA32/RPA2 antibody.

Note: This product is for in vitro research use only and is not intended for use in humans or animals.