

# Vimentin (Phospho-Ser56) Antibody

Catalog No: #11940

Package Size: #11940-1 50ul #11940-2 100ul

Orders: [order@signalwayantibody.com](mailto:order@signalwayantibody.com)Support: [tech@signalwayantibody.com](mailto:tech@signalwayantibody.com)

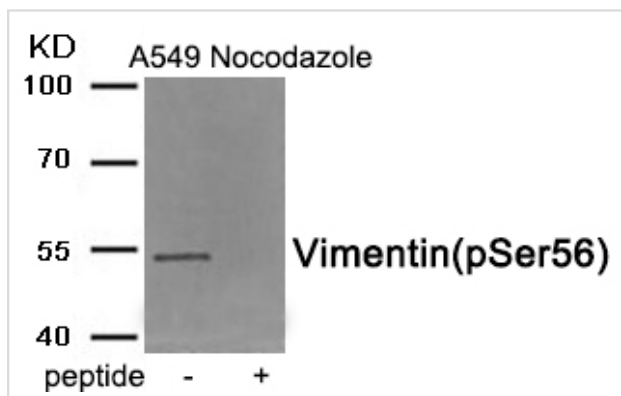
## Description

Product Name	Vimentin (Phospho-Ser56) Antibody
Host Species	Rabbit
Clonality	Polyclonal
Purification	Antibodies were produced by immunizing rabbits with synthetic phosphopeptide and KLH conjugates. Antibodies were purified by affinity-chromatography using epitope-specific phosphopeptide. Non-phospho specific antibodies were removed by chromatography using non-phosphopeptide.
Applications	WB
Species Reactivity	Hu
Specificity	The antibody detects endogenous level of Vimentin only when phosphorylated at serine 56.
Immunogen Type	Peptide-KLH
Immunogen Description	Peptide sequence around phosphorylation site of serine 56 (A-S-S(p)-P-G) derived from Human Vimentin.
Target Name	Vimentin
Modification	Phospho
Other Names	VIME; vimentin;
Accession No.	Swiss-Prot#: P08670; NCBI Gene#: 7431; NCBI Protein#: NP_003371.2
SDS-PAGE MW	54kd
Concentration	1.0mg/ml
Formulation	Rabbit IgG in phosphate buffered saline (without Mg <sup>2+</sup> and Ca <sup>2+</sup> ), pH 7.4, 150mM NaCl, 0.02% sodium azide and 50% glycerol.
Storage	Store at -20°C/1 year

## Application Details

Western blotting: 1:500~1:1000

## Images



Western blot analysis of extracts from A549 cells treated with Nocodazole using Phospho-Vimentin (Ser56) antibody #11940. The lane on the right is treated with the antigen-specific peptide.

## Background

---

Vimentins are class-III intermediate filaments found in various non-epithelial cells, especially mesenchymal cells.

Matsuyama M, et al. (2013)J Biol Chem 288, 35626-35.

Haolong C, et al. (2013)PLoS One 8, e73900.

Kotula E, et al. (2013)PLoS One 8, e80313.

---

Note: This product is for in vitro research use only and is not intended for use in humans or animals.