

## Estrogen Receptor- beta (Phospho-Ser105) Antibody

Catalog No: #11998



Package Size: #11998-1 50ul #11998-2 100ul

Orders: order@signalwayantibody.com

Support: tech@signalwayantibody.com

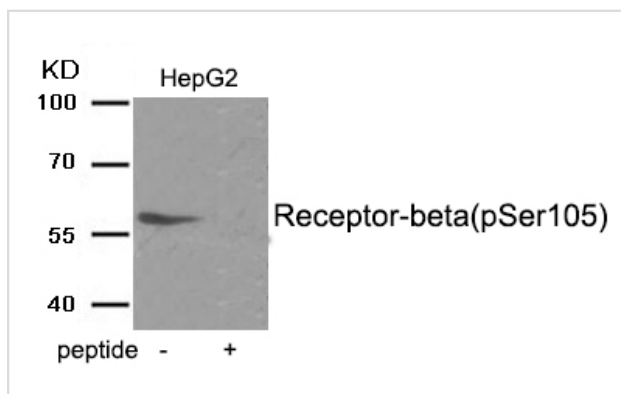
## Description

Product Name	Estrogen Receptor- beta (Phospho-Ser105) Antibody
Host Species	Rabbit
Clonality	Polyclonal
Purification	Antibodies were produced by immunizing rabbits with synthetic phosphopeptide and KLH conjugates. Antibodies were purified by affinity-chromatography using epitope-specific phosphopeptide. Non-phospho specific antibodies were removed by chromatography using non-phosphopeptide.
Applications	WB
Species Reactivity	Hu Ms Rt
Specificity	The antibody detects endogenous level of Estrogen Receptor- beta only when phosphorylated at serine 105.
Immunogen Type	Peptide-KLH
Immunogen Description	Peptide sequence around phosphorylation site of serine105(Q-R-S(p)-P-W) derived from Human Estrogen Receptor- beta.
Target Name	Estrogen Receptor- beta
Modification	Phospho
Other Names	ESR2; ESTRB; Estrogen receptor beta; NR3A2;
Accession No.	Swiss-Prot#: Q92731; NCBI Gene#: 2100; NCBI Protein#: NP_001035365.1
SDS-PAGE MW	59kd
Concentration	1.0mg/ml
Formulation	Rabbit IgG in phosphate buffered saline (without Mg <sup>2+</sup> and Ca <sup>2+</sup> ), pH 7.4, 150mM NaCl, 0.02% sodium azide and 50% glycerol.
Storage	Store at -20°C/1 year

## Application Details

Western blotting: 1:500~1:1000

## Images



Western blot analysis of extracts from HepG2 tissue using Estrogen Receptor- beta (Phospho-Ser105) antibody #11998. The lane on the right is treated with the antigen-specific peptide.

## Background

---

Nuclear hormone receptor. The steroid hormones and their receptors are involved in the regulation of eukaryotic gene expression and affect cellular proliferation and differentiation in target tissues.

Hamilton-Burke W, et al. (2010) *Am J Pathol* 177, 1079-86.

St-Laurent V, Sanchez M, Charbonneau C, Tremblay A

(2005) *J Steroid Biochem Mol Biol* 94, 23-37.

Tremblay A,

Tremblay GB, Labrie F, Giguère V (1999) *Mol Cell* 3, 513-9 .

---

Note: This product is for in vitro research use only and is not intended for use in humans or animals.